

Section 508 Compliant Yes No

CSN Data Validation
UCD TI #801C, Version 1.7
September 22, 2023
Page 1 of 27

UCD CSN Technical Information #801C

CSN Data Validation

*Chemical Speciation Network
Air Quality Research Center
University of California, Davis*

*September 22, 2023
Version 1.7*

Prepared By: DocuSigned by:
Marcus Langston
0A10CFCF79B0452... Date: 9/27/2023

Reviewed By: DocuSigned by:
[Signature]
C4452D4B4E1D400... Date: 9/29/2023

Approved By: DocuSigned by:
Marcus Langston
0A10CFCF79B0452... Date: 9/29/2023



DOCUMENT HISTORY

Revision	Release Date	Initials	Section/s Modified	Brief Description of Modifications
	11/30/18	NJS	1-3, 7-11	Rewording for clarity and updating name changes.
	7/31/19	DEY, KAG	1-3, 7-8	Additional step and refinement to the validation process. Wording changes for clarity.
	3/6/20	KAG	4-17	Updated content to reflect CSN Data Explorer changes. Wording changes for clarity.
1.4	4/2/2021	DEY, AMM	3, 8, 10	Added definitions, added new and updated existing processes, wording changes for clarity.
1.5	10/31/22	DEY, AMM	3,8,10	Included HIPS. Changed names of web-based tools. Included information on acceptable ranges for operational data as a table; expanded. Wording changes, including section headings, for clarity.
1.6	3/27/23	AM	8	Clarified level 0 sample volume using average flowrate, added TS flag.
1.7	09/22/23	ML	10	Fix references to Figure 13

TABLE OF CONTENTS

1. Purpose and Applicability 5

2. Summary of the Method 5

3. Definitions 5

4. Health and Safety Warnings 5

5. Cautions 6

6. Interferences 6

7. Personnel Qualifications, Duties, and Training 6

8. Procedural Steps 6

 8.1 Collect Measurement Data, Perform Checks and Comparisons 13

 8.2 Data Validation Checks: Automated and Analyst Performed Checks 15

 8.3 Review Summary Plots 19

 8.4 Review All Data via Web Application 20

9. Data Validation Equations 25

10. Data Validation Code 26

11. Equipment and Supplies 26

12. Quality Assurance and Quality Control 27

13. References 27

LIST OF FIGURES

Figure 1. Screenshot of the Analysis Completeness tab of the CSN Network Status web app..... 7
Figure 2. Screenshot of the Batch Review tab of the CSN Network Status web app..... 8
Figure 3. Screenshot of the Batch Review tab of the CSN Network Status web app..... 9
Figure 4. Screenshot of the Status Grid tab of the CSN Network Status web app 10
Figure 5. Sample output of *plot_xrfic* for comparing EDXRF and IC results 20
Figure 6. The Early Review tab of the CSN Data web app 22
Figure 7. The Carbon tab of the CSN Data web app 22
Figure 8. The Explorer tab of the CSN Data web app 23
Figure 9. The Field Blanks tab of the CSN Data web app..... 23
Figure 10. The Parameter Review tab of the CSN Data web app..... 24
Figure 11. The Cr/Ni Review tab of the CSN Data web app..... 24
Figure 12. The Network Review tab of the CSN Data web app..... 25
Figure 13. Flow diagram of the validation code in `datvalCSN::csn_validate` 26

LIST OF TABLES

Table 1. Acceptable ranges of flow and ambient data for CSN and AQS..... 16

1. PURPOSE AND APPLICABILITY

The subject of this technical information (TI) concerns validating the analytical data from the Chemical Speciation Network (CSN). Data from the network are reviewed and validated using a variety of tools. Qualifier codes and/or null codes are applied as appropriate.

2. SUMMARY OF THE METHOD

The University of California, Davis (UCD) analyst uses the UCD CSN Data Management website along with custom software in the R language to perform validation. The primary tools for review are summary data tables and comparison figures.

3. DEFINITIONS

- **AQS:** EPA's Air Quality System database.
- **Chemical Speciation Network (CSN):** EPA's PM_{2.5} sampling network, with sites located principally in urban areas.
- **crocker:** A custom software package in the R language that contains the data processing code used to produce, check, and post the final results.
- **CSN database:** An SQL Server database that is the central warehouse of CSN preliminary and final data at UCD.
- **Data Analysis and Reporting Tool (DART):** A web application for environmental data visualization and validation procedures.
- **datvalCSN:** A custom software package in the R language that contains the data validation code used to collect, compare, and flag the final results.
- **Energy Dispersive X-Ray Fluorescence (EDXRF):** An analytical technique used to determine the concentration of elements.
- **Hybrid Integrating Plate and Sphere (HIPS):** An analytical technique for filter optical absorption.
- **Ion Chromatography (IC):** An analytical technique used to determine the concentration of ions.
- **Method Detection Limit (MDL):** A lower limit of detection specific to method of analysis and reported parameter.
- **State, Local, and Tribal (SLT) Agencies:** Air agencies responsible for operating and maintaining a wide variety of ambient monitoring systems across the United States, including CSN.
- **Thermal Optical Analysis (TOA):** An analytical technique used to determine the concentration of carbon.

4. HEALTH AND SAFETY WARNINGS

Not applicable.

5. CAUTIONS

Not applicable.

6. INTERFERENCES

Not applicable.

7. PERSONNEL QUALIFICATIONS, DUTIES, AND TRAINING

The UCD Air Quality Research Center (AQRC) Data and Reporting Group staff assigned to tasks described in this document have advanced training in database programming and database management.

8. PROCEDURAL STEPS

Data validation is performed using the *crocker* and *datvalCSN* R packages, which are developed and maintained by UCD specifically for data processing, monitoring, and validation of the CSN data. Data validation is performed by the UCD Data and Reporting Group on monthly batches of data (a calendar month of sample start dates). Validation occurs in four steps:

- Collect necessary measurement data (Section 8.1)
- Compare results (Section 8.2)
- Review summary plots (Section 8.3)
- Review summary data via web application (Section 8.4)

UCD is responsible for the first two levels (Level 0 and Level 1) of the data validation process. CSN data delivered to DART is Level 1 data while data delivered to the AQS database is Level 2 data. The state, local, and tribal (SLT) agency validators perform Level 2 data validation while the data is available in DART. The levels are defined as follows below.

Level 0

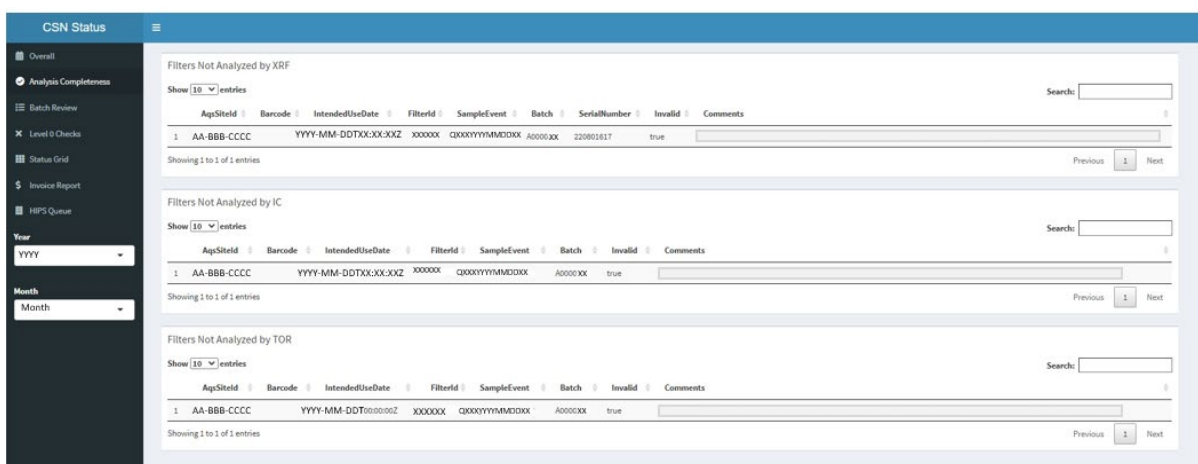
Data at this level are raw data obtained directly from the data-acquiring instruments. These data can be reduced or reformatted, but are unedited and not reviewed, without any adjustments for known biases or problems that might have been identified during preventative maintenance checks or audits. These data may monitor instrument operations on a frequent basis (e.g., ambient temperature of sampler every fifteen minutes). Average times represent the minimum intervals recorded, and these data may need to be aggregated to obtain averages for the sampling periods (e.g., 24-hour average). Level 0 data have not been edited for instrument downtime, nor have procedural adjustments for baseline shifts, span changes, or known problems been applied. Examples of CSN Level 0 data include:

- 24-hour averaged pressure, temperature, and flow data recorded during sample change procedures;
- Sample date and sampling time before consistency checks;

- Analysis completeness;
- Sample status.

Using the CSN Network Status web app, various level 0 checks can be performed. The CSN Network Status page is useful for monitoring the progress of analyses and timelines for delivery. There are a myriad of data views, and the user should explore the various figures and tables. An important portion to review for validation is the “Analysis Completeness” tab (Figure 1), where the analyst should inspect filter records not analyzed after labs have notified that analysis is complete; all unanalyzed filters should either have a null code applied to filter or analysis data, if appropriate, or be queued for analysis.

Figure 1. Screenshot of the Analysis Completeness tab of the CSN Network Status web app.

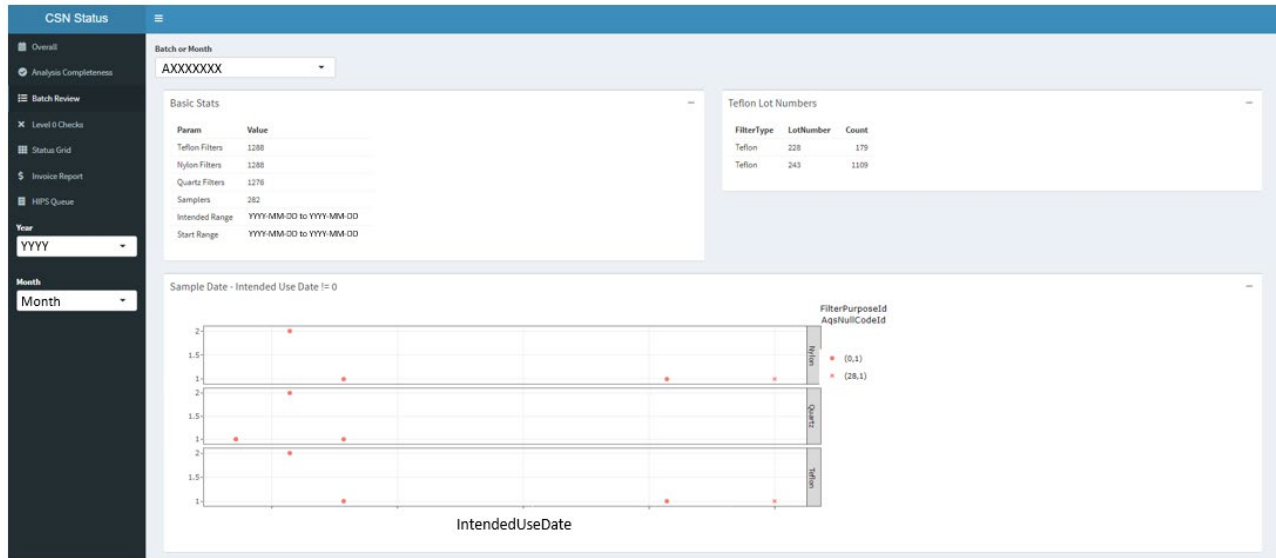


The Analysis Completeness page is separated into three analysis types (XRF, IC & TOR) and lists filters which have yet to be analyzed. Once analysis labs notify the validation group that XRF and TOR analysis is complete and ions data have been ingested, the analyst is to check this list for any missed filters (filters with barcodes listed).

The “Batch Review” tab (Figure 2) provides a tool for the analyst to validate sample volumes as well as the sample dates and times prior to consistency checks. For each batch or month of data, information available to review on this tab includes:

- the number of filters for each filter type;
- the number of samplers represented by the filter records;
- the date ranges for both Intended Use Dates and Sample Start Dates; and
- the Lot Numbers and counts of PTFE filters.

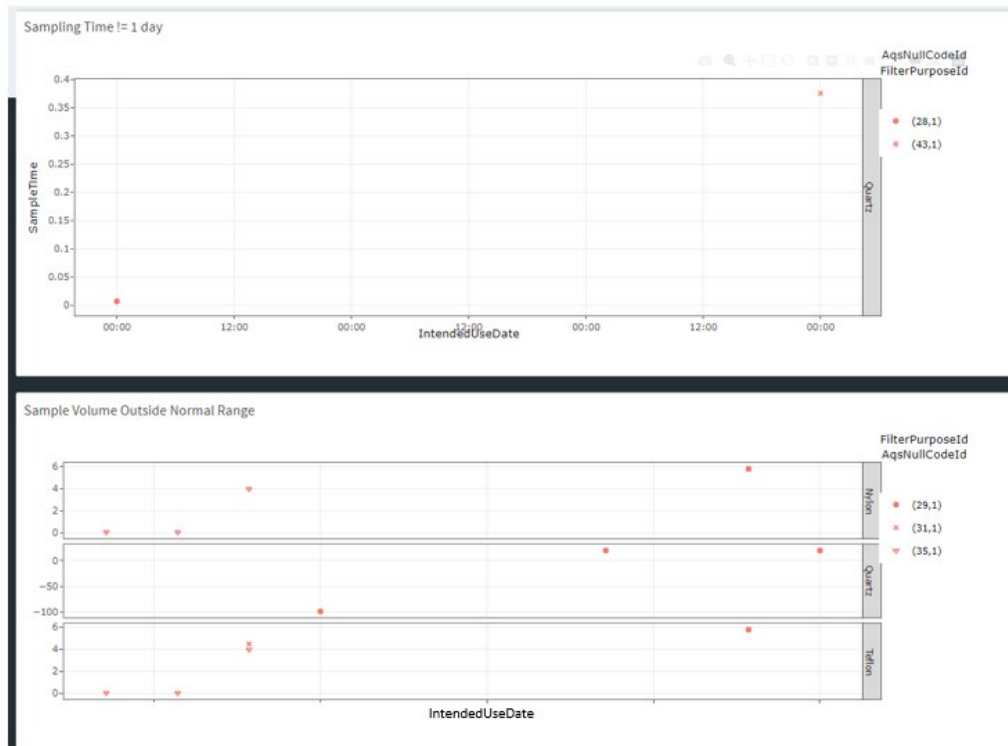
Figure 2. Screenshot of the Batch Review tab of the CSN Network Status web app.



The top interactive plot on the Batch Review page (Figure 2) shows results when Sample Start Date is not equal to the Intended Use Date for a filter record, and includes the Filter Purpose (i.e. Sample, Field Blank, etc.) as well as the presence or absence of a Null Code which is associated with the filter records. As shown in the figure, use the “Year” and “Month” drop down lists on the left as well as the “Batch or Month” drop down list at the top of the Batch Review tab to look at the appropriate data set. Hover over and click on data points on plot to view Filter record information for validation.

The following two interactive plots (Figure 3) show results when recorded Sample Times are not equal to 24 hours and when calculated Sample Volumes, using Avg. Flow Rate, are outside normal range (a similar check is included in the “Level 0 Checks” mentioned below). Simply hover over and click on data points on plot to view Filter record information for validation.

Figure 3. Screenshot of the Batch Review tab of the CSN Network Status web app.



Similarly, the “Status Grid” tab (Figure 4) provides a useful visualization to identify consecutive invalid samples, missing analysis data for a given filter record, and duplicate issues. The grid is generated for each of the three filter types and shows information for each site from the selected month. Each cell denotes an intended sampling date for a given site and is color coded according to filter status. This grid can also be used to check overall network issues such as bulk errors in the electronic data.

Figure 4. Screenshot of the Status Grid tab of the CSN Network Status web app.



Other important views from the CSN Network Status web app include the “Level 0 Checks” tab, a visual tool of various checks performed dynamically, which can be used to identify issues with the data. The appearance of the page is similar to that of the “Batch Review” tab but if no data meet the following criteria, no plot will be shown for that check. Filter records require further investigation by the analyst for these scenarios:

- The start date of a sample filter is missing and there are no comments associated with the filter;
- The end date of a sample filter is missing and there are no comments associated with the filter;
- The start date of a sample filter is not NULL, is the same as the end date, and there are no comments associated with the filter;
- The filter sampled for more than 24 hours and there are no comments associated with the filter;
- The calculated sample volume is more than 10% different from the reported sample volume and there are no comments associated with the filter;
- The sample is marked as invalid but there are no comments associated with the filter;
- The Filter Analysis ID is missing and there are no comments associated with the filter;
- The start date is outside of the expected range for the month of interest;
- The Filter Type does not match the expected Analysis Type;
- The “TT” qualifier code is inconsistent with the transport temperature reported;
- The sample volume is missing and there are no null codes.

If any data records change during the Level 0 validation process such that the final reported electronic record differs from the physical field sheet record, an ‘A1’ or ‘B1’

qualifier code will be applied along with appropriate comments to filter records for the attention of the SLT validators while data are in DART (see UCD TI 801A CSN Data Ingest, Table 3 for list of qualifier (validity) codes and Table 4 for list of null codes).

When Teflon and quartz filters physically arrive at UCD, the temperature is measured using temperature probes shipped in the coolers. The UCD laboratory will inform the Data and Reporting Group of any temperatures above 4 °C and provide which filters were contained so the “TT” qualifier can be applied and comment added (see UCD CSN SOP #903, Section 8). If no temperature measurement can be recorded, the “TT” qualifier is applied, and the data validator will add comments to the filters contained in the cooler explaining the details and circumstance.

Level 1A

Data at this level have passed several automatic and manual qualitative reviews for accuracy and completeness. The focus of Level 1A validation is to obtain as complete a dataset as possible. CSN Level 1A data validation consists of:

- Adding records for expected filter samples that were never generated, for completeness purposes;
- Adding individual filter records which would complete a sampling event (PTFE, Nylon and Quartz filters’ samplings);
- Applying null codes to reflect sampler malfunctions, site or laboratory analyst errors, or power outages;
- Reviewing analyst, sample handling laboratory, and measurement laboratory comments to verify consistency between records and correct any typographical errors;
- Verifying analyst, sample handling laboratory, and measurement laboratory comments for questionable records;
- Identifying, investigating, and/or flagging data that are beyond reasonable bounds or that are unrepresentative of the variable being measured. Checks that are visualized using static plots of data include:
 - Sulfur/sulfate ion ratios outside the range 0.784 to 1.731 and non-soil potassium/potassium ion ratios outside the range 0.656 to 6.76 (where non-soil potassium is defined as $K - (2/27) \times Si$),
 - Collocated mass/reconstructed mass ratios outside the range of 0.5 to 2,
 - Anion/cation ratios outside the range 0.86 to 2.82,
 - Z-scores of the OC/EC (organic carbon/elemental carbon) ratios outside the range -1 to 1.
- Examining specific data relating to known issues, including contamination, and flagging data that meet set criteria, including:
 - Suspected stainless steel contamination. Data is collected and reviewed by performing a chromium/nickel check.
 - The criteria for the chromium/nickel check are: $Cr > 0.1$; $1.5 < Cr/Ni < 6$ and; $1.75 < Fe/Cr < 7$.
- Examining daily flow rates based on the results of the *flow.check* function that identifies abnormal flow rates and significant variations over 24-hours;

- Applying qualifier or null codes when deviations from nominal operational settings have occurred (e.g., temperature or pressure outside instrumental tolerances);
- Examining the field blank analyses for evidence of swaps with sample filters, being run with flow, and/or for evidence of leaks in the system;
- Examining the sample analyses for evidence of swaps with other sample filters on different days.

If any data records change during the Level 1A validation process such that the final reported electronic record differs from the physical field sheet record, an “A1” or “B1” qualifier flag will be applied along with appropriate comments to filter records for the attention of the SLT validators while data are in DART.

PTFE filters receiving gravimetric analysis may have the “TS - Holding Time Or Transport Temperature Is Out Of Specs” null code applied as a result of not meeting gravimetric analysis criteria. The Null Code is applied at the weigh lab, which does not currently support analysis/parameter specific flagging, thus the null code is applied to the whole filter. These occurrences will need to be confirmed either via filter comment or with the Sample Handling Laboratory to ensure only the gravimetric analysis results need to be reported as invalid. Once confirmed, remove the null code from the filter using the “Edit AQS Null Code” button on the Filter Details page, adding a comment explaining why the “TS” Null Code is being removed. Then, under “Masses”, use the “Edit” button of the AnalysisFlags, select the “TS” AQS Code, add a comment explaining the action, select the box next to “PM25” in Parameters and click “Add Selected”.

Level 1B

Data at this level have passed additional quantitative and qualitative reviews for accuracy and internal consistency. Comparison with collocated measurements and internal consistency tests are applied by the analyst. Discrepancies that cannot be resolved are reported to the measurement laboratories and sample handling laboratory for investigation. Data that deviate from consistency objectives are individually examined for errors. Extreme outliers (e.g., -85 °C temperature) are noted with qualifier codes or null codes depending on the parameter and value. Changes to the data (e.g., swapping dates on consecutive samples) are recorded and documented by providing comments to the SLT agency validators. Level 1B time-series data review is conducted on a site-by-site basis using a combination of *datvalCSN* package functions and Shiny web applications. The historical archive of CSN data is used to place new measurement values in context with previous measurements. CSN Level 1B data validation includes:

- Comparing sulfur and sulfate concentrations, non-soil potassium and potassium ion concentrations, chlorine and chloride concentrations as well as concentrations of organic carbon by reflectance and by transmittance;
- Comparing organic carbon to elemental carbon for both blank corrected and uncorrected concentrations;
- Comparing filter absorption to elemental carbon and black carbon (BC) concentrations (BC is a calculated variable that is not reported but is used at UCD to aid validation);

Electronic documents are official. Paper copies are for reference only.

- Comparing anions to cations in a molar mass balance;
- Comparing reconstructed mass and collocated PM_{2.5} mass, where available;
- Examining individual data points identified by the various checks as potential sample swaps;
- Reviewing network level field blank mass loadings for a given month to identify outliers, and further comparing with associated sample filter data to identify intended purpose swaps or issues with sample set-up or individual samplers;
- Reviewing values of each parameter at the network level for a given month to look for anomalies;
- Comparing parameter values and concentrations with those at other nearby sites, within a specified radius, and across the network for a given month;
- Comparing the analytical data to expectations based on prior years.

Throughout the Level 1B validation process, the analyst will apply a “C1” qualifier flag and appropriate comments to filter records which should be highlighted for the attention of the SLT validators while data are in DART.

Level 2

Level 2 validation is performed by the SLT validators after submission of data files to DART. At this level, the data are reconciled with local events, knowledge, and expertise. Upon completion of the DART review period, data are sent back to UCD for a final review before data are submitted to AQS. The final review at UCD ensures consistency between user comments and data transfers. UCD does not make changes to DART-reviewed data unless requested by the SLT validators.

8.1 Collect Measurement Data, Perform Checks and Comparisons

In the previous step, laboratory results for elements, ions, and carbon are processed into mass per volume of air and filter absorption coefficient is processed into inverse megameters and posted into the UCD CSN database (see UCD TI 801B). Additionally, collocated mass data should be collected from the AirNowTech API web service via file transfer protocol (FTP). All data can be collected using functions in the *datvalCSN* package. In addition to collecting measurement data, records for expected sample filters that were never generated are added for completeness purposes.

The analyst begins validation by opening an R environment (such as RStudio) and running the following command to review a data frame of the missing sample filter records¹:

```
[missingRecords] <- datvalCSN::find_missing_filters(Month = ['MM'], Year = ['YYYY'])
```

This function predicts missing filters for the specified month and year based on the sampling frequency for a given site. Missing sample filter records are reconstructed for posting into the database with the null code "AF - Scheduled but not collected" and the comment “Filter was missing from SHAL files. Filter record was added by UCD”. The analyst will review the list of missing records and determine which records are to be

¹ Text in [brackets] indicates values that can be changed by the user. Other values should be typed as written.

added to the database based on the reason for the records originally being missed. For example, a sampler may be offline for repairs and shipment of filters to the site is paused during this time. The following command will add the records to the database:

```
[postRecords] <- datvalCSN::post_missing_filters(missing_filters = [missingRecords],  
username = ['userCredentials'])
```

The analyst will then run the following command to review a dataframe of records which would complete incomplete sampling events (PTFE, Nylon and Quartz filters):

```
[incompleteSamplingEvents] <- datvalCSN::find_incomplete_days(StartDate = ['YYYY-  
MM-DD'], EndDate = ['YYYY-MM-DD'])
```

This function will predict missing filter records for a specified date range based on how many filter records are available for each date present and the sampling frequency for a given site. Missing filter records are reconstructed for posting into the database with the null code “AF – Scheduled but not collected” and the comment “Filter record has been added by UCD for sample event completeness”. The analyst will review the list of missing filter records and determine which records are to be added to the database based on what filter records are already designated for the sample date. For example, a PTFE and a Nylon filter may be sampled the day following a scheduled sample date while a Quartz filter is sampled on the scheduled date. A Quartz filter record would be created for the day after the scheduled sampling date, while a PTFE and a Nylon filter record would be created for the scheduled sample date. The following command will add the records to the database:

```
[postRecords] <- datvalCSN::post_incomplete_days(missing_filters =  
[incompleteSamplingEvents], username = ['userCredentials'])
```

Once all expected records are in the database, the analyst will run the following command to collect records for all measured and derived parameters from the laboratories, and to begin validation by running automated checks:

```
[monthData] <- datvalCSN::csn_validate(Month = ['MM'], Year = ['YYYY'])
```

The command form shown here is appropriate for typical validation procedures; more options can be included by changing defaults. To find out more information on this command, run `?csn_validate` in the R environment.

Within the `csn_validate` command, records are collected from the `analysis.Results` and `analysis.CompositeResults` tables that are pertinent to the month and year specified. Mass data from the AirNowTech API web service are collected when the function parameter `with.mass` is set to TRUE, whereby a function within the `csn_validate` command extracts the desired data from the posted values on the AirNowTech server. The results will be returned in memory to the variable `monthData`. The qualifier codes and null codes assigned from various checks performed within the `csn_validate` function are associated accordingly with the relevant records for delivery.

8.2 Data Validation Checks: Automated and Analyst Performed Checks

The validation process begins with automated checks. Each check compares resulting values against pre-defined limits as well as comparable parameters. All automated checks are performed as part of the *csn_validate* command. The resulting data tables from these checks are formatted for further graphical interpretation. The individual checks are described below. As each check is a function within the *datvalCSN* R package, it is possible to execute them outside of the *csn_validate* command, if required. In the following descriptions of the checks, the function name is documented; further details can be obtained for each function from the help documents in the R environment by entering a question mark before the function name in the R console. Similar data to the output data tables from the checks are also available with visualization tools described below (see Section 8.4); the data tables and visualization tools can be used separately and in parallel for validation.

Operational parameters such as sample flow rate and operating temperature should have been checked both at the sampling site as well as at the Sample Handling Laboratory. However, there are two checks included within the *csn_validate* function for flow and ambient data (function names: *Flow.check* and *Amb.check*, respectively) to compare reported values with instrumental limits to determine if additional flagging is needed. Both functions use the *filter.Filters* table from the CSN database.

The *Flow.check* function generates a data frame within the R environment containing the records that have aberrant flow values but have not been invalidated. The null code “AH – Sample Flow Rate or CV out of Limits” will be applied to these filters, which represents “Sample Flow Rate or CV out of Limits” in the AQS database. The null code “SV – Sample Volume Out of Limits” will be applied when the sample volume is out of limits. If either the “AH – Sample Flow Rate or CV out of Limits” or “SV – Sample Volume Out of Limits” null codes are applied, all parameters except the ambient temperature and ambient pressure will be invalidated.

The *Amb.check* will not invalidate samples based on ambient temperature, ambient pressure, or transport temperature, but instead will append an appropriate code to appropriate parameters notifying end users that these operational parameters were outside the specifications only if the appropriate code has not already been applied. Table 1 displays the value ranges, by sampler, used in *Flow.check* and *Amb.check* along with the qualifier or null code which will be flagged on respective data if values are outside the valid range. Also included in this table are the allowable limits as defined by AQS. Any parameter with values outside these allowable limits, that do not have a null code already applied, will be reported as invalid with the “AN – Machine Malfunction” null code so the record can be delivered to AQS.

Table 1. Acceptable ranges of flow and ambient data for CSN and AQS, which are checked with the *Flow.check* and *Amb.check* in the *csn_validate* function. The qualifier or null code flags applied to data when values are out of the range are detailed. Flags applied when ambient data are out of acceptable ranges are applied only to the specified ambient data record. Flags applied when flow data are out of acceptable ranges for CSN are applied to all parameters except ambient data records. Flags applied when flow data are out of acceptable ranges for AQS are only applied to the flow data record.

Parameter	URG3000N	MetOne SASS/Super SASS	AQS Flag	Flag Type	URG3000N	MetOne SASS/Super SASS	AQS Flag	Flag Type
	Acceptable Range for CSN				Acceptable Range for AQS			
Average Ambient Temperature	-20 to 45 °C	-30 to 50 °C	QT	Qualifier	-40 to 55 °C	-40 to 55 °C	AN	Null Code
Average Ambient Pressure	600 to 810 mmHg	600 to 810 mmHg	QP	Qualifier	450 to 1000 mmHg	450 to 850 mmHg	AN	Null Code
Sample Flow Rate	19.8 to 24.2 LPM	6.03 to 7.37 LPM	AH	Null Code	N/A	N/A	N/A	N/A
Sample Flow Rate CV	0 to 2 %	0 to 5 %	AH	Null Code	0 to 20 %	0 to 20 %	AN	Null Code
Sample Volume	28.5 to 34.9 m ³	8.6 to 10.6 m ³	SV	Null Code	0 to 35 m ³	0 to 25 m ³	AN	Null Code
Sample Time	1380 to 1500 minutes	1380 to 1500 minutes	AG	Null Code	N/A	N/A	N/A	N/A

If the transport temperature is greater than 4 °C – as measured upon receipt at the Sample Handling Laboratory – then the “TT – Transport Temperature is Out of Specs” qualifier code will be applied to all analytical species parameters for the given filter. The “X – Filter Temperature Difference or Average out of Spec” qualifier code is assigned by the site operator and is specific to temperature of the filter; it is only applied to analytical species parameters for a given filter.

Analytical data are checked using various functions that are automatically run when the *csn_validate* command is executed. The three main checks performed, which exclusively use the data collected from the database during the first step of the *csn_validate* command, are for ions (function name: *ions.check*), carbon (function name: *carbon.check*), and a cross-module comparison, hereafter referred to as the XRF-IC check (function name: *xrfic.check*).

The ions check (*ions.check*) compares the anions and cations data to aid identification of outlier ions measurements. The carbon check (*carbon.check*) compares organic carbon and elemental carbon to aid identification of outlier carbon measurements. The XRF-IC check (*xrfic.check*) compares sulfur and potassium elemental concentrations from the

PTFE filter to sulfate and potassium ion concentrations from the nylon filter. The potassium elemental concentrations are used to calculate non-soil potassium (where non-soil K is K minus $(2/27) \times \text{Si}$) for comparison with the potassium ion because the soil-bound potassium is not represented in potassium ion. The ratio of each corresponding element/ion pair is compared to aid identification of questionable samples. For each of the checks, a summary of the results is produced with outliers indicated. Sample records are not invalidated during this process; however, a qualifier code may be automatically applied if comparison results lie outside the predefined limits. If flagged as an outlier, a comment is added to the record to indicate which check produced the qualifier code. An example of automatic flagging is where the “5 – outlier” qualifier code is applied to all analytical species from the PTFE and nylon filters (i.e. elements and ions, respectively) when the sulfur/sulfate ratio is outside of the predefined limits. This is the only qualifier code that is applied from the automated analytical checks for ions, carbon, and XRF-IC.

Another automated check attempts to identify swaps of sample data. The swap check (function name: *swap.check*) calculates two indices, one assuming two samples were not swapped and the other assuming the samples were swapped. These indices use the sulfur/sulfate ratio to identify potentially swapped samples for PTFE and nylon filter samples. Similar to the XRF-IC check output, the swapped variable will contain concentrations for sulfur and sulfate, outliers by the sulfur/sulfate ratio, and potentially swapped samples based on the calculated indices.

The Chromium/Nickel contamination check (function name: *cr.check*) lists the filters meeting the stainless steel criteria mentioned in Level 1A. In the final output data frame, these filters will have the ‘SC – Sampler Contamination’ null code applied to 5 element species parameters from the XRF analysis and a comment stating “Likely sampler contamination from stainless steel impacting Cr, Ni, Fe, Co, and Cu.”

The other functions performed by the *csn_validate* command include sample-field blank swap check (function name: *get_blank_swaps*), a mass check (function name: *mass.check*), a completeness check (function name: *csn_complete*), qualifier code checks (function name: *qualifiers*), and a function to process invalid filters (function name: *csn_X*).

The sample-field blank swap check (*get_blank_swaps*) compares field blanks with sample filters to determine if a filter swap may have occurred. The mass check (*mass.check*) uses the collocated mass concentrations retrieved from AirNowTech to compare with reconstructed mass. When available, it also compares gravimetric mass with reconstructed mass (though gravimetric mass is not typically included in the CSN measurement suite). No codes are applied during the mass check; however, the output is useful for the analyst to identify potential issues.

The completeness check (*csn_complete*) ensures that all reportable parameters for every sample event have complete records. If any expected parameter records are missing a value and null code, the function fills in with an “AM - Miscellaneous Void” null code for clarification during review in DART by the SLT validators. The qualifier code check

(*qualifiers*) and invalid filters check (*csn_X*) ensure that codes are associated with appropriate parameters and output lists of all records with qualifier codes and null codes, respectively. Each of the available qualifier codes and null codes are applied for either a single parameter, a group of parameters (such as all analytical or all operational parameters), or all parameters relating to a given filter type. Some parameters have both program defined and AQS defined (outside of which AQS will not accept the data record) acceptable value ranges, requiring qualifier code or null code application for cases where values fall outside of the acceptable ranges. As part of the qualifier code check, the Intended Use Date and Sample Start Date of filters are compared. If the dates do not match, the “2 – Operational Deviation” qualifier code and an appropriate comment are added to the filter parameters. As part of the invalid filters check, the “AI – Insufficient Data (cannot be calculated)” null code is applied to composite parameters when it is not possible to calculate the concentrations, such as if a contributing species is invalidated.

Although these checks are performed automatically within *csn_validate*, the analyst should review the outputs from all of the checks to further investigate issues and/or confirm that codes have been applied appropriately. The data table outputs from the checks performed within *csn_validate* are listed below and can be viewed in R using the following syntax:

View(monthData@datatable)

- **monthData@Flow.Check** – *Flow.check*
- **monthData@Ambient.Check** – *Amb.check*
- **monthData@Ions.Check** – *ions.check*
- **monthData@Carbon.Check** – *carbon.check*
- **monthData@XRFIC.Check** – *xrfic.check*
- **monthData@Swap.Check** – *swap.check*
- **monthData@CrContamination.Check** – *cr.check*
- **monthData@SwappedFB** – *get_blank_swaps*
- **monthData@Mass.Check** – *mass.check*
- **monthData@Completeness** – *csn_complete*
- **monthData@Qualifiers** – *qualifiers*
- **monthData@Invalid.Samples** – *csn_X*

To further investigate issues, the analyst may need to work with the Sample Handling Laboratory or analytical laboratories and/or use other available tools, such as regional concentration comparisons, to determine if additional codes or comments should be applied manually.

In addition, the analyst can review various data for the time period specified when running *csn_validate*, including all sample results, all field blank results, AirNow Tech data, and the output data table that will be used for delivering to DART. These data tables can be viewed in R:

- **monthData@Results** – *csn_get*, all processed results
- **monthData@Field** – *complete_fieldBlanks*, all field blank results
- **monthData@AirNow** – *csn_validation_mass*, data queried from AirNow Tech
- **monthData@Output.DF** – DART delivery data table

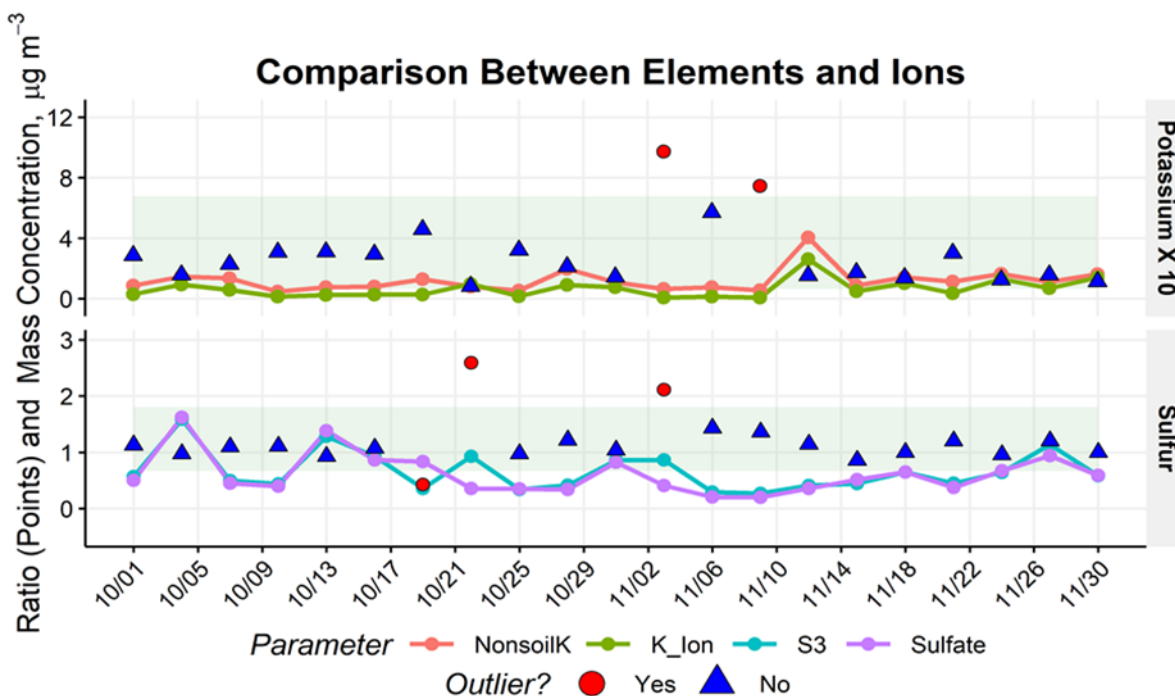
8.3 Review Summary Plots

To generate a summary plot, the analyst can use a variety of R plotting tools or custom plotting tools in the *datvalCSN* package (see Level 1A above for the static plots). The analyst should review the help pages for each of the available plotting functions. For example, to view the results of the XRF-IC check function at a particular CSN site AA-BBB-CCCC, the analyst can run:

```
[results] <- datvalCSN::csn_get(start.date = ['YYYY-MM-DD'], end.date =  
['YYYY-MM-DD'], Site = ['AA-BBB-CCCC'], FBs = [FALSE])  
[xrfic] <- datvalCSN::xrfic.check([results])  
datvalCSN::plot_xrfic([xrfic], AqsSiteId = ['AA-BBB-CCCC'], POC = ['D'],  
y.limits = c([y1, y2]))
```

where “AA” is the state code, “BBB” is the county code, “CCCC” is the site code, and “D” is the Parameter Occurrence Code (POC). To reduce database querying time, typically only the sample data is plotted; the option to retrieve field blank data, *FBs*, is set to FALSE. If start and end dates are not specified, then the number of days back in time from the last sampling date of the processed data available in the database is used. This can be specified by the *csn_get* function parameter *days*. To view the current month of data in context, it is recommended that at least 90 days of data is reviewed; for example, see Figure 5.

Figure 5. Sample output of *plot_xrfic* for comparing EDXRF and IC results. The blue and pink lines are sulfur and elemental non-soil potassium measurements by EDXRF; the purple and green lines are 3× sulfate and potassium ion measurements by IC. The points are the EDXRF/IC ratio. Outliers are indicated per ratio for cases that fall outside of the defined limits (shaded areas). The ‘5 - outlier’ qualifier code is applied for sulfur/sulfate outliers where one species’ concentrations are above three times the MDL.



It may be necessary to change the axis ranges on a plot to view the data more closely in which case the *y.limits* variable can be utilized. However, as data is reviewed on a monthly basis, for convenience, the analyst can enter the following command:

```
create_monthly_plots(['Month'], [MonthData])
```

to produce plots for each site and each check. The default directory for saved plots is *U:/CSN/QA/Temporary Plots/*, with a subfolder based on the month of interest (e.g., *Month Plots*). The *[MONTHYY]* parameter is a character string that will be used to name the plot folder while the *[MonthData]* parameter is the “validation” object created by the *csn_validate* function. The analyst should review plots for each site to identify potentially swapped samples as well as aberrant data that has not yet been flagged.

8.4 Review All Data via Web Application

In order to facilitate efficient review of all data for a given month, custom web applications (web apps) were developed. There are three important web app tools for the CSN analyst, which include CSN Network Status, CSN Data Management, and CSN Data web apps.

The CSN Data Management web app is an online access point to interact with the UCD CSN database. With this tool, the user can look up filter, batch, and site information. Qualifier codes and null codes can be assigned here with an explanatory comment. Each

time a code is changed, a timestamped record is included. This web app is also the portal for importing data from external laboratories or sources. Files from the respective folders in the networked U drive are uploaded following the instructions in TI 801A.

The CSN Data web app has multiple tabs for viewing the resultant data in various forms. The analyst should familiarize themselves with the intuitive controls of the following tabs:

- “Early Review” (Figure 6) – data displayed enables the user to identify anomalies in the PTFE and nylon filters and/or XRF and IC analysis by reviewing the sulfur/sulfate and non-soil potassium/potassium ion time series and ratios;
- “Carbon” (Figure 7) – displays raw OC and EC concentrations, providing a tool for the user to identify anomalies in the quartz filters and/or TOA analysis. Also displays raw EC/BC concentrations and filter absorption (fAbs), providing a tool for the user to identify anomalies in the quartz filters, PTFE filters, TOA analysis and/or HIPS analysis;
- “Explorer” (Figure 8) – comprehensive tool enabling full chemical composition to be assessed using spatial (Regional Mode) and temporal (Multi-select) comparisons. A back-trajectory may also be displayed on the interactive map, where the map view can be changed to be of MODIS satellite imagery as well as other options;
- "Field Blanks" (Figure 9) – compares field blanks with associated sample filters enabling rapid identification of unusually high field blank mass loadings within the context of the monthly and historical network data, and may indicate a swap between field blank and sample filters;
- “Parameter Review” (Figure 10) - must be reviewed by the analyst for each monthly dataset. With this tool, every reported data point can be inspected quickly and efficiently within the context of the monthly and historical network data;
- “Cr/Ni Review” (Figure 11) – displays two plots with the Chromium/Nickel stainless steel contamination and all filter results plotted for visualization;
- “Network Review” (Figure 12) – displays network comparisons of S/SO₄, Cl-/Cl, Non-Soil K/K+ and OCTR/OCTT. Enables rapid identification of outliers and anomalies in relationships between comparable species within the context of the network data for the time period specified.

It is important to note the “Early Review” and/or “Carbon” tabs may be used prior to receiving a complete, monthly dataset. These tools utilize reported sulfur/sulfate and non-soil potassium/potassium ion mass loadings or OC/EC raw and EC and BC raw/fAbs concentrations before the post processing steps described in TI 801B. The “Field Blanks” tab displays network-wide statistics including MDLs, 95th percentiles, and artifact values.

Figure 6. The Early Review tab of the CSN Data web app showing the sulfur/sulfate and non-soil potassium/potassium ion time series for the specified time range at a specified site.

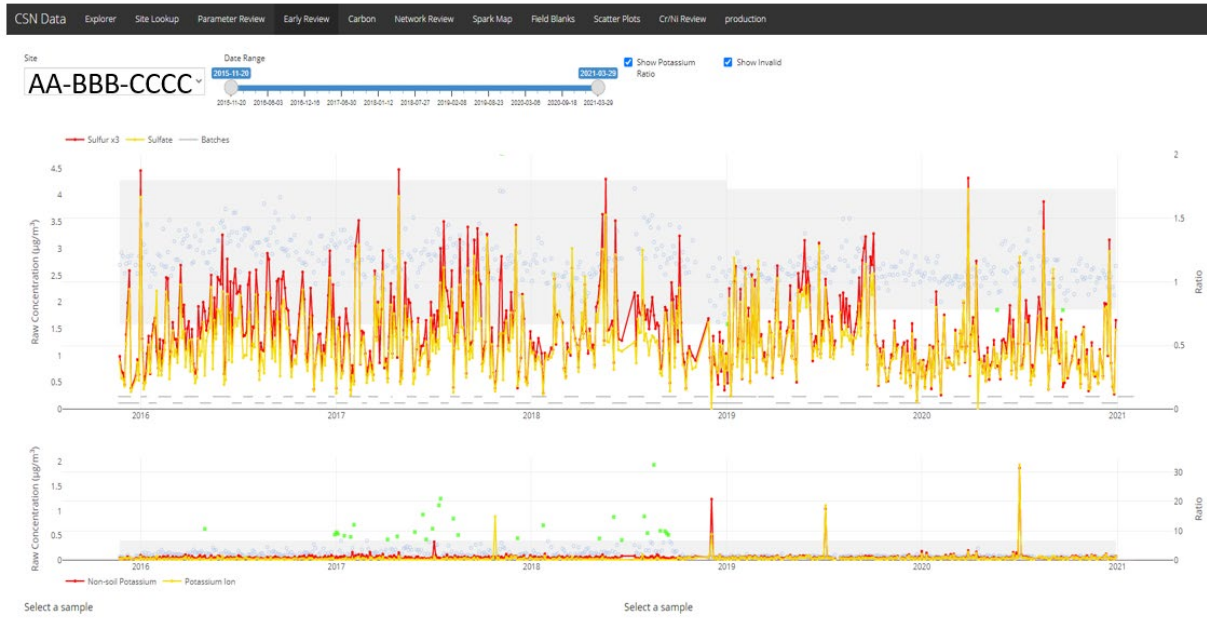


Figure 7. The Carbon tab of the CSN Data web app showing the OC/EC and fAbs/EC/BC time series for the specified time range at a specified site.



Figure 8. The Explorer tab of the CSN Data web app showing various tools available to investigate and compare selected data.

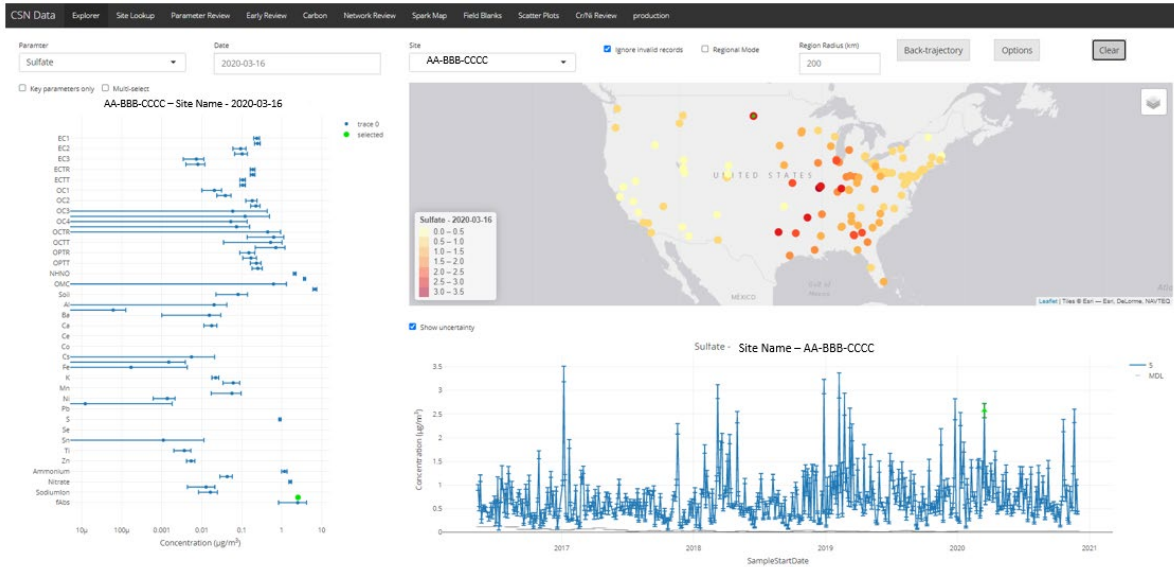


Figure 9. The Field Blanks tab of the CSN Data web app showing the mass loading of a selected species from one of the four categories for all field blank filters across the network.

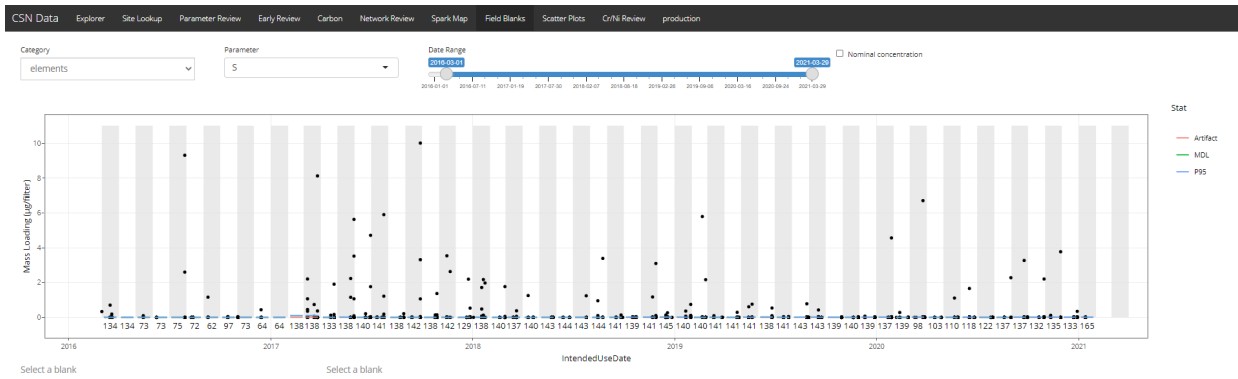


Figure 10. The Parameter Review tab of the CSN Data web app showing the sulfur concentrations for the entire CSN. Sites ordered from west to east on the x-axis and designated by the AQS Site ID. The blue points represent the data for the month selected while the tops of the gray box and whisker indicate historical 90th and 99th percentiles, respectively.

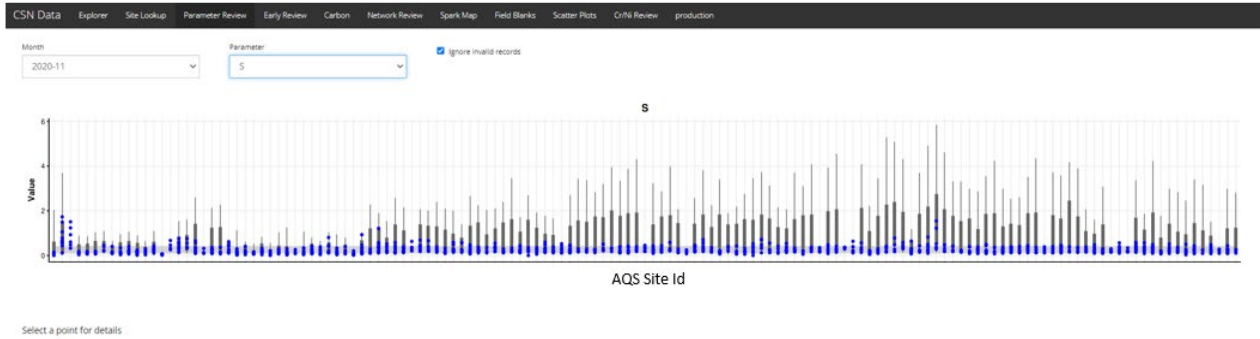


Figure 11. The Cr/Ni Review tab of the CSN Data web app visualizes the two ratio tests used in the Chromium/Nickel contamination criteria with a line at the limiting Chromium concentration. Filters meeting the criteria are highlighted in green. Clicking on a point will display a time series of the three species used in the criteria.

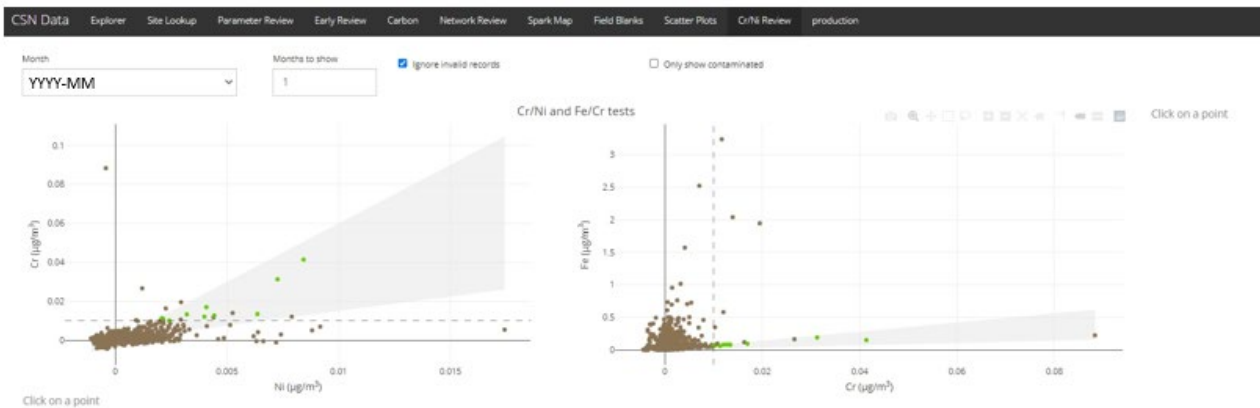
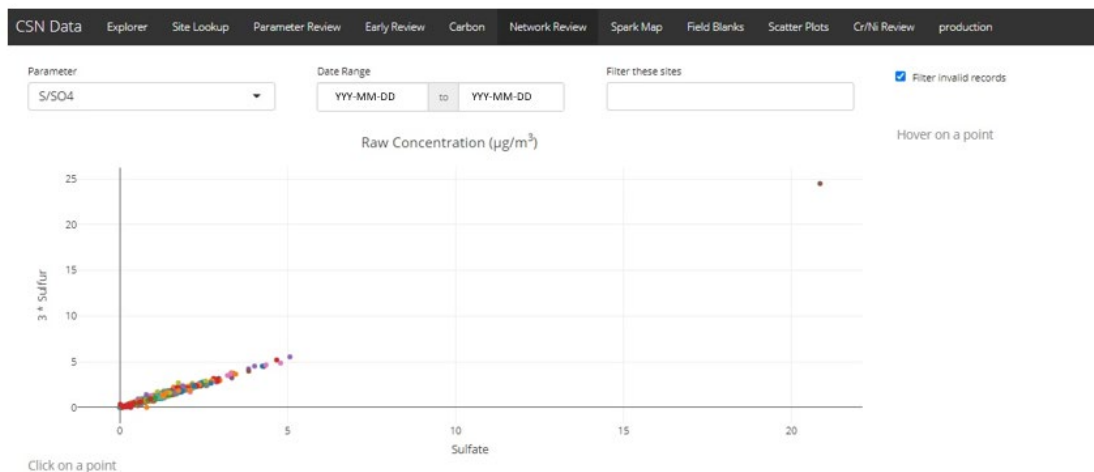


Figure 12. The Network Review tab of the CSN Data web app visualizes the comparisons of cross-filter species and unique analysis detection methods. Plots include: S/SO₄, Non-Soil K/K+, Cl/Cl-, OCTR/OCTT, and fAbs/EC.



The data and plots available to review in the CSN Network Status web app have been described earlier in this section relating to Level 0 validation.

9. DATA VALIDATION EQUATIONS

The following section presents the equations used to calculate swap check indices. These calculations are performed by the *datvalCSN* R package.

The ratio of sulfur to sulfate in the ambient atmosphere is generally well known. Since the majority of sulfur-bearing aerosols by mass are in the form of sulfate, the stoichiometric ratio of $3 \times \text{sulfur} / \text{sulfate}$ is typically close to one. The calculated indices of the swap check function utilize this tendency. The first index assumes that two subsequent samples are not swapped. The ratio of sulfur by EDXRF to sulfate by IC is subtracted by one for each sample, and the two results are multiplied. Since both ratios are expected to be close to unity, a small number is expected. Inversely, the second index assumes two samples have been swapped. This irregularity would result in a significantly larger number than index 1. Mathematically,

$$Index1 = \left(\frac{S3_1}{SO4_1} - 1 \right) * \left(\frac{S3_2}{SO4_2} - 1 \right) \quad 1$$

$$Index2 = \left(\frac{S3_1}{SO4_2} - 1 \right) * \left(\frac{S3_2}{SO4_1} - 1 \right) \quad 2$$

Where,

$S3_x$ = sulfur concentration ($\mu\text{g}/\text{m}^3$) multiplied by 3

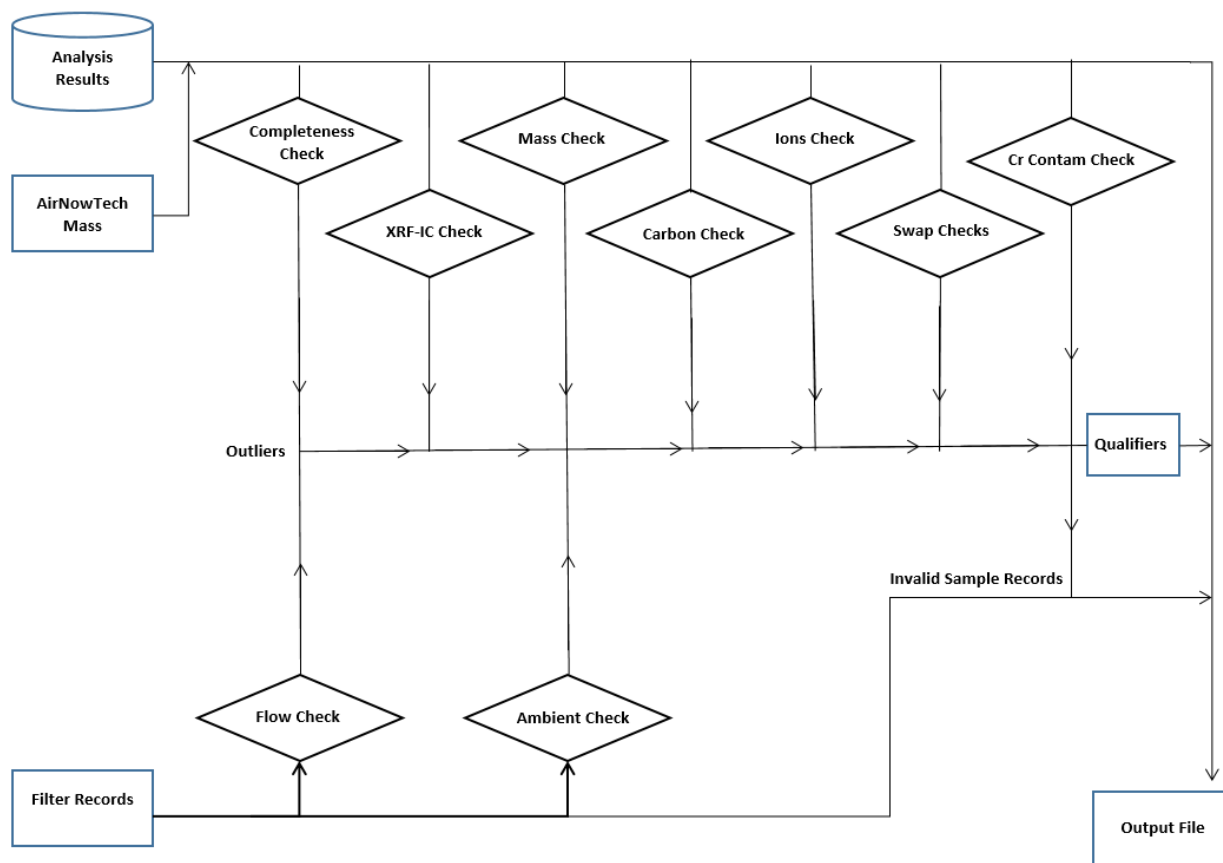
$SO4_x$ = sulfate concentration ($\mu\text{g}/\text{m}^3$)

Subscripts denote the sampling event of interest (1 for target event, 2 for subsequent event). Empirically, potential swaps are indicated by an Index1 < -0.03 and an absolute value of Index2 < 0.05.

10. DATA VALIDATION CODE

This section describes the data flow through the data validation code used to execute CSN validation checks. Figure 13 outlines the flow of data from the filter and analysis results database tables to final results. The wrapper function *csn_validate* is the only function executed directly by the analyst (see Section 8.1); *csn_validate* in turn calls several functions sequentially to generate data frames with outliers identified. Source code for the functions shown in Figure 13 is stored in the AQRC source repository.

Figure 13. Flow diagram of the validation code in `datvalCSN::csn_validate`. Rectangles represent data files, diamonds represent R functions, cylinders represent databases, and lines represent inputs and outputs.



11. EQUIPMENT AND SUPPLIES

The hardware and software used for CSN data validation are described in the associated *UCD CSN SOP #801: Processing & Validating Raw Data*.

12. QUALITY ASSURANCE AND QUALITY CONTROL

Software bugs and data management issues are tracked through JIRA tracking software. All users have access to our internal JIRA website and can submit, track, and comment on bug reports.

13. REFERENCES

Not applicable.