

## Dolly Sods (DOS01) 2021 Site Report

The Interagency Monitoring of Protected Visual Environments (IMPROVE) is a long-term air pollution measurement program designed to document and track visibility in protected areas. IMPROVE samples and analyzes the haze particles that impair visibility so their sources can be identified and addressed.

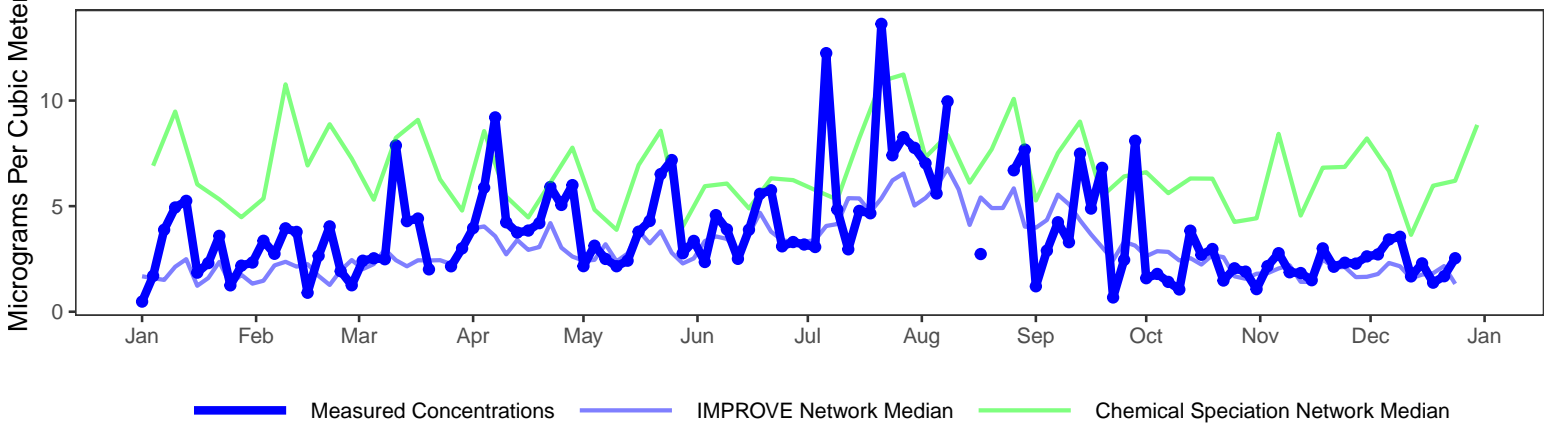
Percent of Samples Successfully Collected and Analyzed Per Year

| 2004 | 2005 | 2006 | 2007 | 2008 | 2009 | 2010 | 2011 | 2012 | 2013 | 2014 | 2015 | 2016 | 2017 | 2018 | 2019 | 2020 | 2021 |
|------|------|------|------|------|------|------|------|------|------|------|------|------|------|------|------|------|------|
| 100  | 100  | 97   | 99   | 99   | 100  | 98   | 98   | 98   | 98   | 96   | 99   | 99   | 95   | 98   | 90   | 99   | 98   |

Samples Successfully Collected and Analyzed in 2021 by Filter Type. PTFE: 132 (100%), Nylon: 128 (97.0%), Quartz: 116 (87.9%)

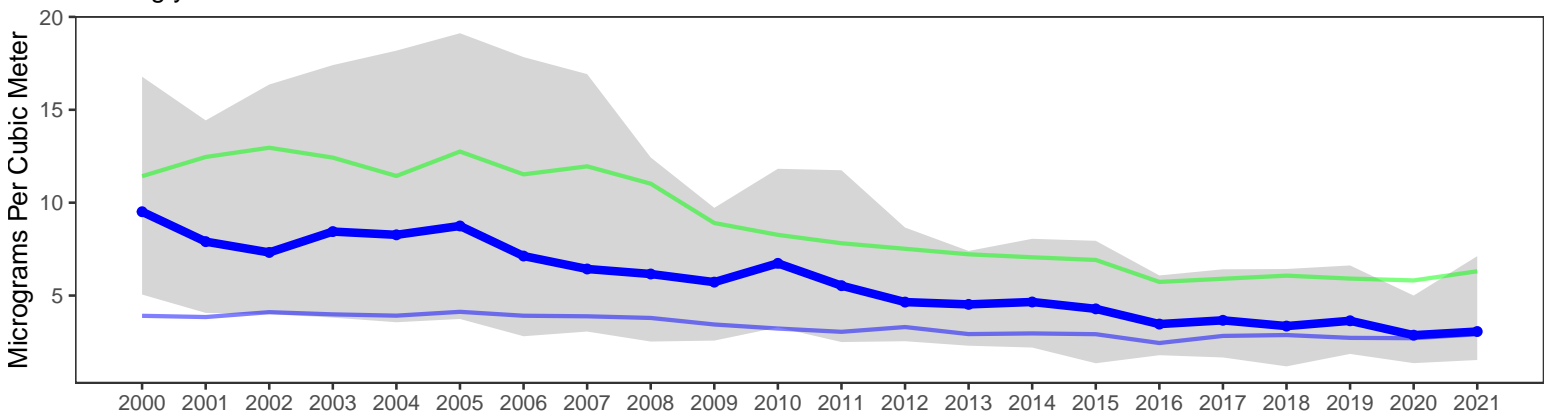
The plots below show temporal trends for site 54-093-9000 alongside network-wide CSN and IMPROVE median concentrations. The top plot shows the variability of the reconstructed fine mass (RFM) concentrations during 2021; RFM can only be calculated if all three filters collected on a sampling day are valid. The bottom plot illustrates the long-term trends of ambient concentrations; the gray shaded region represents the range of values measured each year at this site, illustrated using the 10<sup>th</sup> and 90<sup>th</sup> percentile values.

### Reconstructed Fine Particle Mass Concentrations in 2021



### Long-Term Trends in Reconstructed Fine Mass

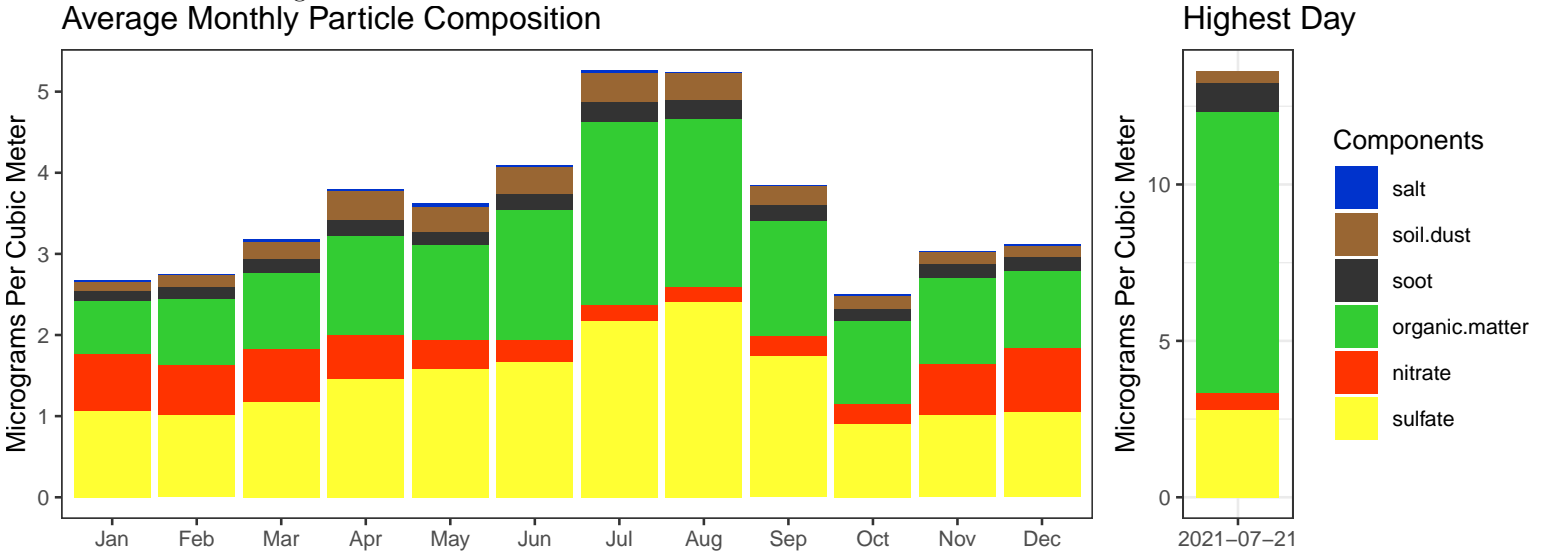
Missing years are due to low number of RFM values.



### More Information

To view and download IMPROVE data, you can visit: <https://www.epa.gov/outdoor-air-quality-data>  
 Univ. of California, Davis website with information about current research and publications: <https://aqrc.ucdavis.edu/>  
 The Colorado State Univ. website with data resources, literature, and visibility overviews: <http://vista.cira.colostate.edu/Improve/>  
 EPA website with guidance and background documents: <https://www.epa.gov/amtic/chemical-speciation-network-csn>  
 Real-time air monitoring data for the United States: <https://www.airnow.gov/>

The following plots summarize the chemical composition of particles collected at this site. The monthly averaged compositions calculated from 2017-2021 data are shown on the left while compositions for the day with the highest measured concentrations during 2021 are shown on the right.



| Components     | Calculation   | Natural Sources  | Anthropogenic Sources                                      |
|----------------|---|--|--|
| Salt           | $1.8 \cdot \text{Chloride}$   | Ocean spray, dry lakebeds                              | Chemical manufacturing, lake consumption                   |
| Soil Dust      | $2.2 \cdot \text{Al} + 2.49 \cdot \text{Si} + 1.63 \cdot \text{Ca} + 2.42 \cdot \text{Fe} + 1.94 \cdot \text{Ti}$ | Soil resuspension, dust storms<br>long-range transport | Construction, agriculture, deforestation,<br>unpaved roads |
| Soot           | <i>Elemental Carbon</i>   | Wildfires  | Motor vehicles, wood burning, smoking                      |
| Organic Matter | $1.4 \cdot \text{Organic Carbon}$   | Plants, animals, wildfires                             | Motor vehicles, cooking oils, household cleaners           |
| Nitrate        | $1.29 \cdot \text{Nitrate}$   | Plants, animals  | Fertilizer, stock yards, chemical manufacturing            |
| Sulfate        | $4.125 \cdot \text{Sulfur}$   | Volcanism  | Coal-fired power plants, chemical manufacturing            |

The following map shows the average RFM concentrations for nearby sites in both CSN and the rural IMPROVE Network. The point shapes indicate which network the sites are associated with. The color bar indicates the average annual RFM concentration (micrograms per cubic meter) measured at each site in 2021.

