



A winter garden in an alder swamp

Where conies now come out to sun and romp,

As near a paradise as it can be

And not melt snow or start a dormant tree

– excerpt from *A Winter Eden* by Robert Frost

IMPROVE is a collaborative association of state, tribal, and federal agencies, and international partners. US Environmental Protection Agency is the primary funding source, with contracting and research support from the National Park Service. The Air Quality Group at the University of California, Davis is the central analytical laboratory, with ion analysis provided by Research Triangle Institute, and carbon analysis provided by Desert Research Institute.

For questions or problems with optical or scene monitoring equipment, contact Mark Tigges, Air Resource Specialists, Ft. Collins, CO at 970-224-9300. For questions or problems with air sampler controllers, filters, or audits, contact Jose Mojica, UC Davis at 530-752-1123.

This calendar was produced with funds from private donors at Crocker Nuclear Laboratory at University of California, Davis.

Photographs taken by IMPROVE Field Technicians.
Front Cover Photo: Crater Lake National Park
Back Cover Photo: Lake Tahoe Basin Management Unit



JANUARY 2015

OPERATOR INVOLVEMENT — THE KEY TO NETWORK SUCCESS

Sun	Mon	Tue	Wed	Thu	Fri	Sat
				1 New Year's Day	2	3 IMPROVE Particle Sampling Day
4	5	6 IMPROVE Particle Sampling Day: Special cartridge change: move cassette 3 from old cartridge to new.	7	8	9 IMPROVE Particle Sampling Day	10
11	12 IMPROVE Particle Sampling Day	13 Change IMPROVE particle cartridges	14	15 IMPROVE Particle Sampling Day	16	17
18 IMPROVE Particle Sampling Day	19 Martin Luther King Jr. Day	20 Change IMPROVE particle cartridges	21 IMPROVE Particle Sampling Day	22	23	24 IMPROVE Particle Sampling Day
25	26	27 IMPROVE Particle Sampling Day: Special cartridge change: move cassette 3 from old cartridge to new.	28	29	30 IMPROVE Particle Sampling Day	31

DECEMBER 2014

Sun	Mon	Tue	Wed	Thu	Fri	Sat
	1	2	3	4	5	6
7	8	9	10	11	12	13
14	15	16	17	18	19	20
21	22	23	24	25	26	27
28	29	30	31			

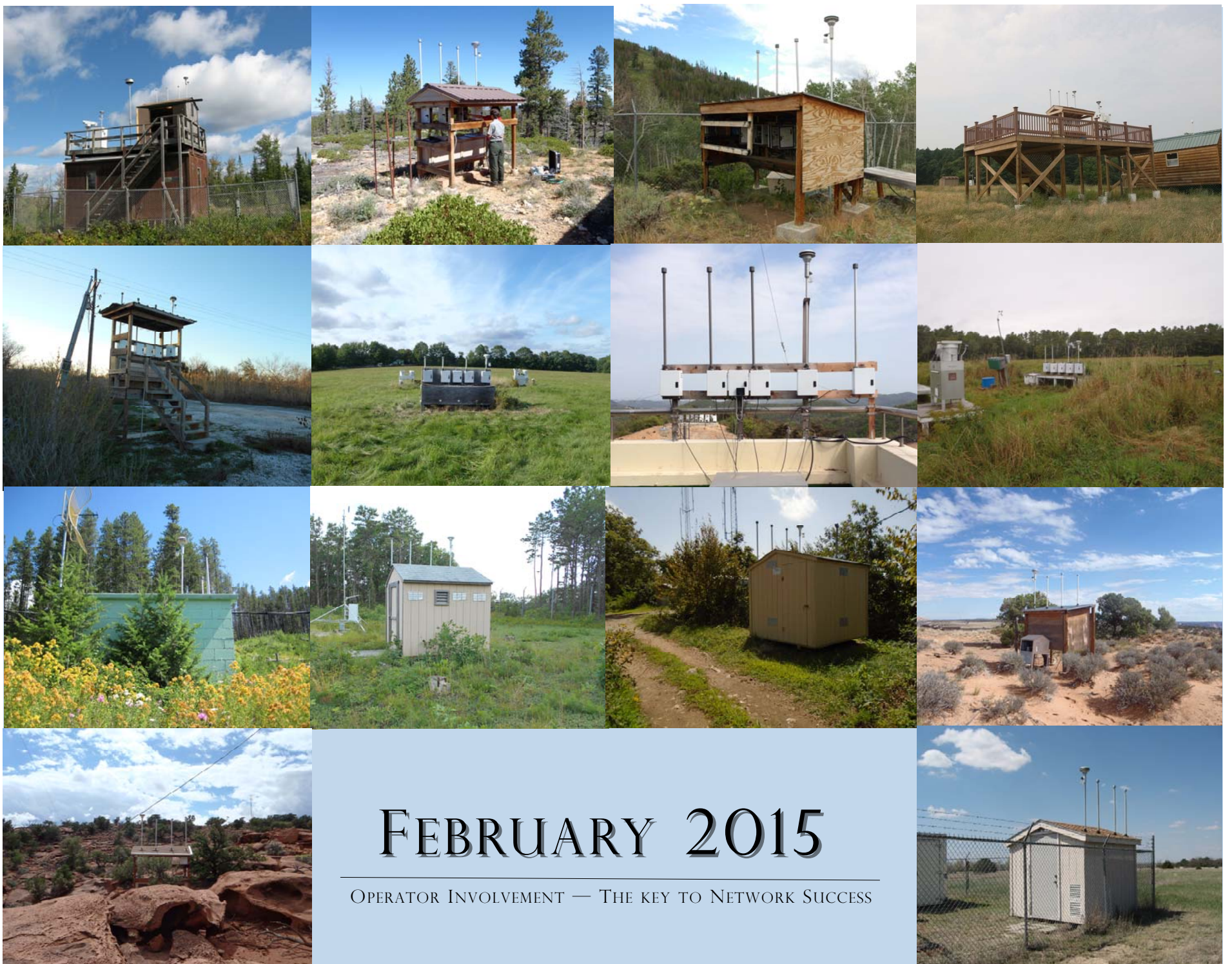
- IMPROVE operator training videos: <http://airquality.crocker.ucdavis.edu/improve/resources-operators/>
- Compare current log sheet values with those on the sample log sheet. This may be found posted outside a module, usually the C Module (green), or near the controller. If values are out of range, please call UC-Davis.

For questions regarding the IMPROVE equipment or samples, please call:

UC Davis:
General Lab
(530) 752-1123

FEBRUARY 2015

Sun	Mon	Tue	Wed	Thu	Fri	Sat
1	2	3	4	5	6	7
8	9	10	11	12	13	14
15	16	17	18	19	20	21
22	23	24	25	26	27	28



FEBRUARY 2015

OPERATOR INVOLVEMENT — THE KEY TO NETWORK SUCCESS

Sun	Mon	Tue	Wed	Thu	Fri	Sat
1	2 IMPROVE Particle Sampling Day	3 Change IMPROVE particle cartridges	4	5 IMPROVE Particle Sampling Day	6	7
8 IMPROVE Particle Sampling Day	9	10 Change IMPROVE particle cartridges	11 IMPROVE Particle Sampling Day	12	13	14 IMPROVE Particle Sampling Day
15	16 Presidents Day	17 IMPROVE Particle Sampling Day: Special cartridge change: move cassette 3 from old cartridge to new.	18	19	20 IMPROVE Particle Sampling Day	21
22	23 IMPROVE Particle Sampling Day	24 Change IMPROVE particle cartridges	25	26 IMPROVE Particle Sampling Day	27	28

JANUARY 2015

Sun	Mon	Tue	Wed	Thu	Fri	Sat
				1	2	3
4	5	6	7	8	9	10
11	12	13	14	15	16	17
18	19	20	21	22	23	24
25	26	27	28	29	30	31

- Electrical connections (e.g., extension cords) exposed to wet conditions should be GFCI protected.

For questions regarding the IMPROVE equipment or samples, please call:

UC Davis:
General Lab
(530) 752-1123

MARCH 2015

Sun	Mon	Tue	Wed	Thu	Fri	Sat
1	2	3	4	5	6	7
8	9	10	11	12	13	14
15	16	17	18	19	20	21
22	23	24	25	26	27	28
29	30	31				



MARCH 2015

OPERATOR INVOLVEMENT — THE KEY TO NETWORK SUCCESS

Sun	Mon	Tue	Wed	Thu	Fri	Sat
1 IMPROVE Particle Sampling Day	2	3 Change IMPROVE particle cartridges	4 IMPROVE Particle Sampling Day	5	6	7 IMPROVE Particle Sampling Day
8 Daylight Savings Time Begins Do not change sampler clock.	9	10 IMPROVE Particle Sampling Day: Special cartridge change: move cassette 3 from old cartridge to new.	11	12	13 IMPROVE Particle Sampling Day	14
15	16 IMPROVE Particle Sampling Day	17 Change IMPROVE particle cartridges	18	19 IMPROVE Particle Sampling Day	20	21
22 IMPROVE Particle Sampling Day	23	24 Change IMPROVE particle cartridges	25 IMPROVE Particle Sampling Day	26	27	28 IMPROVE Particle Sampling Day
29	30	31 IMPROVE Particle Sampling Day: Special cartridge change: move cassette 3 from old cartridge to new.	Apr 1	Apr 2	Apr 3 IMPROVE Particle Sampling Day	Apr 4

FEBRUARY 2015

Sun	Mon	Tue	Wed	Thu	Fri	Sat
1	2	3	4	5	6	7
8	9	10	11	12	13	14
15	16	17	18	19	20	21
22	23	24	25	26	27	28

- If you suspect lightning damage to the sampler, call UC-Davis.
- Check site conditions for interference or damage. (e.g., trees growing close to the sampler inlets)
- IMPROVE sampler operates on Standard Time, do not change the sampler clock to Daylight Savings Time.

For questions regarding the IMPROVE equipment or samples, please call:

UC Davis:
General Lab
(530) 752-1123

APRIL 2015

Sun	Mon	Tue	Wed	Thu	Fri	Sat
			1	2	3	4
5	6	7	8	9	10	11
12	13	14	15	16	17	18
19	20	21	22	23	24	25
26	27	28	29	30		



APRIL 2015

OPERATOR INVOLVEMENT — THE KEY TO NETWORK SUCCESS

Sun	Mon	Tue	Wed	Thu	Fri	Sat
			1	2	3 IMPROVE Particle Sampling Day	4
5	6 IMPROVE Particle Sampling Day	7 Change IMPROVE particle cartridges	8	9 IMPROVE Particle Sampling Day	10	11
12 IMPROVE Particle Sampling Day	13	14 Change IMPROVE particle cartridges	15 IMPROVE Particle Sampling Day	16	17	18 IMPROVE Particle Sampling Day
19	20	21 IMPROVE Particle Sampling Day: Special cartridge change: move cassette 3 from old cartridge to new.	22	23	24 IMPROVE Particle Sampling Day	25
26	27 IMPROVE Particle Sampling Day	28 Change IMPROVE particle cartridges	29	30 IMPROVE Particle Sampling Day	May 1	May 2

MARCH 2015

Sun	Mon	Tue	Wed	Thu	Fri	Sat
1	2	3	4	5	6	7
8	9	10	11	12	13	14
15	16	17	18	19	20	21
22	23	24	25	26	27	28
29	30	31				

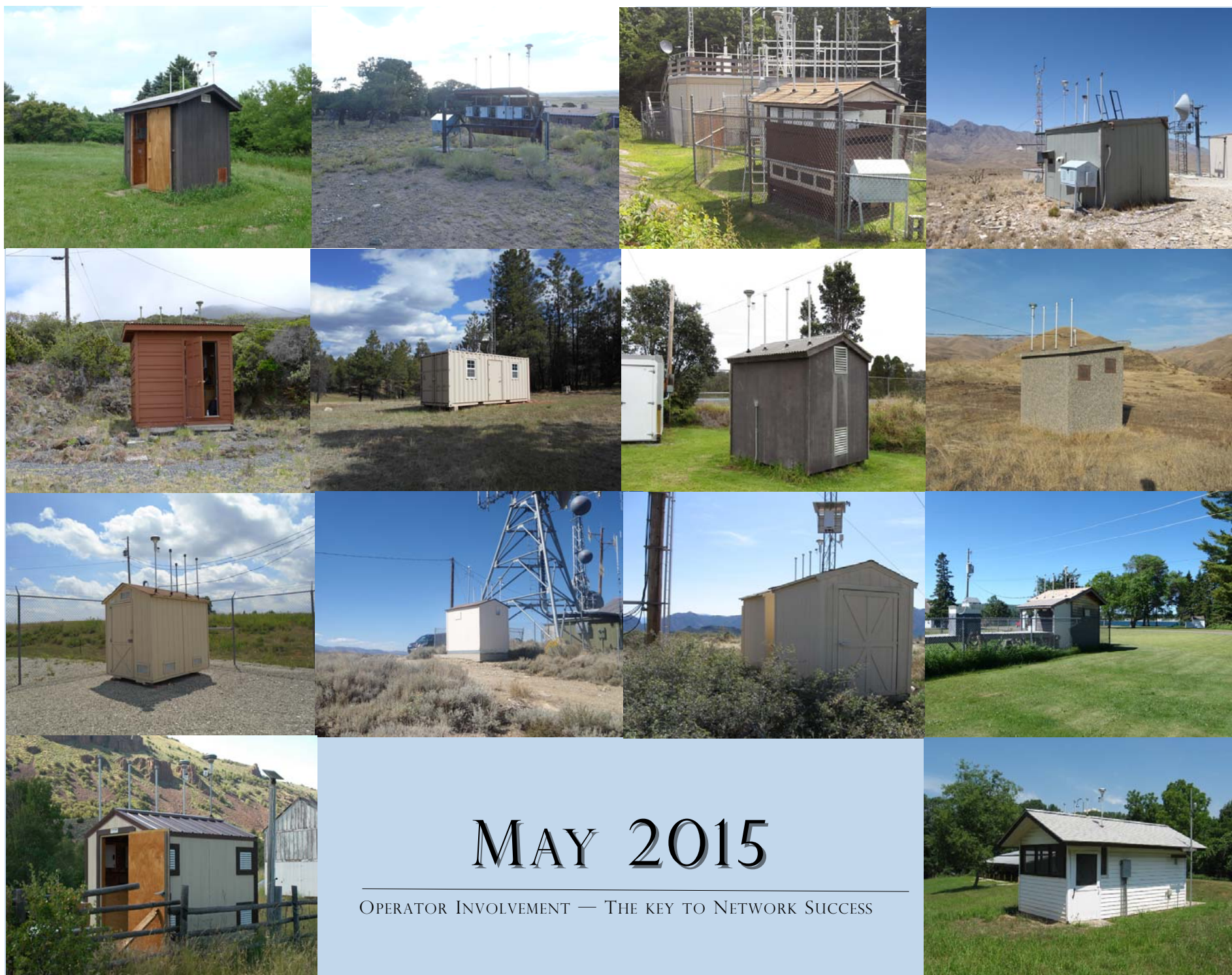
- Check for insect infestations in your sampler. (e.g., nests or spider webs in sampler inlet)
- Check for melting ice on tops of sampler modules.

For questions regarding the IMPROVE equipment or samples, please call:

UC Davis:
General Lab
(530) 752-1123

MAY 2015

Sun	Mon	Tue	Wed	Thu	Fri	Sat
					1	2
3	4	5	6	7	8	9
10	11	12	13	14	15	16
17	18	19	20	21	22	23
24/31	25	26	27	28	29	30



MAY 2015

OPERATOR INVOLVEMENT — THE KEY TO NETWORK SUCCESS

Sun	Mon	Tue	Wed	Thu	Fri	Sat
					1	2
3 IMPROVE Particle Sampling Day	4	5 Change IMPROVE particle cartridges	6 IMPROVE Particle Sampling Day	7	8	9 IMPROVE Particle Sampling Day
10	11	12 IMPROVE Particle Sampling Day: Special cartridge change: move cassette 3 from old cartridge to new.	13	14	15 IMPROVE Particle Sampling Day	16
17	18 IMPROVE Particle Sampling Day	19 Change IMPROVE particle cartridges	20	21 IMPROVE Particle Sampling Day	22	23
24 IMPROVE Particle Sampling Day	25 Memorial Day	26 Change IMPROVE particle cartridges	27 IMPROVE Particle Sampling Day	28	29	30 IMPROVE Particle Sampling Day
31	<ul style="list-style-type: none"> IMPROVE operator training videos: http://airquality.crocker.ucdavis.edu/improve/resources-operators/ Compare current log sheet values with those on the sample log sheet. This may be found posted outside a module, usually the C Module (green), or near the controller. If values are out of range, please call UC-Davis. Correct the time on your sampler if it deviates by more than 5 minutes from the time on a calibrated clock. 					

For questions regarding the IMPROVE equipment or samples, please call:

UC Davis:
General Lab
(530) 752-1123

JUNE 2015

Sun	Mon	Tue	Wed	Thu	Fri	Sat
	1	2	3	4	5	6
7	8	9	10	11	12	13
14	15	16	17	18	19	20
21	22	23	24	25	26	27
28	29	30				



JUNE 2015

OPERATOR INVOLVEMENT — THE KEY TO NETWORK SUCCESS

Sun	Mon	Tue	Wed	Thu	Fri	Sat
	1	2 IMPROVE Particle Sampling Day: Special cartridge change: move cassette 3 from old cartridge to new.	3	4	5 IMPROVE Particle Sampling Day	6
7	8 IMPROVE Particle Sampling Day	9 Change IMPROVE particle cartridges	10	11 IMPROVE Particle Sampling Day	12	13
14 IMPROVE Particle Sampling Day	15	16 Change IMPROVE particle cartridges	17 IMPROVE Particle Sampling Day	18	19	20 IMPROVE Particle Sampling Day
21	22	23 IMPROVE Particle Sampling Day: Special cartridge change: move cassette 3 from old cartridge to new.	24	25	26 IMPROVE Particle Sampling Day	27
28	29 IMPROVE Particle Sampling Day	30 Change IMPROVE particle cartridges	Jul 1	Jul 2 IMPROVE Particle Sampling Day	Jul 3	Jul 4

Sun	Mon	Tue	Wed	Thu	Fri	Sat
					1	2
3	4	5	6	7	8	9
10	11	12	13	14	15	16
17	18	19	20	21	22	23
24/31	25	26	27	28	29	30

- If your sampler is not performing properly, call UC-Davis.
- Check site conditions for interference or damage. (e.g., trees growing close to the sampler inlets)

For questions regarding the IMPROVE equipment or samples, please call:

UC Davis:
General Lab
(530) 752-1123

Sun	Mon	Tue	Wed	Thu	Fri	Sat
			1	2	3	4
5	6	7	8	9	10	11
12	13	14	15	16	17	18
19	20	21	22	23	24	25
26	27	28	29	30	31	



Sun	Mon	Tue	Wed	Thu	Fri	Sat
			1	2 IMPROVE Particle Sampling Day	3 Independence Day observed	4 Independence Day
5 IMPROVE Particle Sampling Day	6	7 Change IMPROVE particle cartridges	8 IMPROVE Particle Sampling Day	9	10	11 IMPROVE Particle Sampling Day
12	13	14 IMPROVE Particle Sampling Day: Special cartridge change: move cassette 3 from old cartridge to new.	15	16	17 IMPROVE Particle Sampling Day	18
19	20 IMPROVE Particle Sampling Day	21 Change IMPROVE particle cartridges	22	23 IMPROVE Particle Sampling Day	24	25
26 IMPROVE Particle Sampling Day	27	28 Change IMPROVE particle cartridges	29 IMPROVE Particle Sampling Day	30	31	Aug 1 IMPROVE Particle Sampling Day

JUNE 2015

Sun	Mon	Tue	Wed	Thu	Fri	Sat
	1	2	3	4	5	6
7	8	9	10	11	12	13
14	15	16	17	18	19	20
21	22	23	24	25	26	27
28	29	30				

• Please keep sampler and pump enclosure free of pests (e.g., rodent nests, insects, etc.), call UC-Davis before using any aerosols on or near the sampler.

For questions regarding the IMPROVE equipment or samples, please call:

UC Davis:
General Lab
(530) 752-1123

AUGUST 2015

Sun	Mon	Tue	Wed	Thu	Fri	Sat
						1
2	3	4	5	6	7	8
9	10	11	12	13	14	15
16	17	18	19	20	21	22
23/30	24/31	25	26	27	28	29

Photo Locations: from left to right: (top row) MEAD, MELA, MEVE, MING (second row) MOHO, MOMO, MONT, MOOS (third row) MORA, MOZI, NEBR, NOAB (bottom row) NOCA, NOCH



AUGUST 2015

OPERATOR INVOLVEMENT — THE KEY TO NETWORK SUCCESS

Sun	Mon	Tue	Wed	Thu	Fri	Sat																																										
						1 IMPROVE Particle Sampling Day																																										
2	3	4 IMPROVE Particle Sampling Day: Special cartridge change: move cassette 3 from old cartridge to new.	5	6	7 IMPROVE Particle Sampling Day	8																																										
9	10 IMPROVE Particle Sampling Day	11 Change IMPROVE particle cartridges	12	13 IMPROVE Particle Sampling Day	14	15																																										
16 IMPROVE Particle Sampling Day	17	18 Change IMPROVE particle cartridges	19 IMPROVE Particle Sampling Day	20	21	22 IMPROVE Particle Sampling Day																																										
23	24	25 IMPROVE Particle Sampling Day: Special cartridge change: move cassette 3 from old cartridge to new.	26	27	28 IMPROVE Particle Sampling Day	29																																										
30	31 IMPROVE Particle Sampling Day	<ul style="list-style-type: none"> • Call UC-Davis if you suspect lightning damage to your sampler. • Check for insect infestations in your sampler. (e.g., nests or spider webs in sampler inlet) 		For questions regarding the IMPROVE equipment or samples, please call: UC Davis: General Lab (530) 752-1123		<div style="border: 2px solid black; padding: 5px;"> <p>SEPTEMBER 2015</p> <table border="1"> <thead> <tr> <th>Sun</th> <th>Mon</th> <th>Tue</th> <th>Wed</th> <th>Thu</th> <th>Fri</th> <th>Sat</th> </tr> </thead> <tbody> <tr> <td></td> <td></td> <td>1</td> <td>2</td> <td>3</td> <td>4</td> <td>5</td> </tr> <tr> <td>6</td> <td>7</td> <td>8</td> <td>9</td> <td>10</td> <td>11</td> <td>12</td> </tr> <tr> <td>13</td> <td>14</td> <td>15</td> <td>16</td> <td>17</td> <td>18</td> <td>19</td> </tr> <tr> <td>30</td> <td>21</td> <td>22</td> <td>23</td> <td>24</td> <td>25</td> <td>26</td> </tr> <tr> <td>27</td> <td>28</td> <td>29</td> <td>30</td> <td></td> <td></td> <td></td> </tr> </tbody> </table> </div>	Sun	Mon	Tue	Wed	Thu	Fri	Sat			1	2	3	4	5	6	7	8	9	10	11	12	13	14	15	16	17	18	19	30	21	22	23	24	25	26	27	28	29	30			
Sun	Mon	Tue	Wed	Thu	Fri	Sat																																										
		1	2	3	4	5																																										
6	7	8	9	10	11	12																																										
13	14	15	16	17	18	19																																										
30	21	22	23	24	25	26																																										
27	28	29	30																																													

Photo Locations: from left to right: (top row) OKEF, OLYM, ORPI, OWVL (second row) PACK, PASA, PEFO, PENO (third row) PHOE, PINN, PITT, PMRF (bottom row) PORE, PRIS



SEPTEMBER 2015

OPERATOR INVOLVEMENT — THE KEY TO NETWORK SUCCESS

Sun	Mon	Tue	Wed	Thu	Fri	Sat
		1 Change IMPROVE particle cartridges	2	3 IMPROVE Particle Sampling Day	4	5
6 IMPROVE Particle Sampling Day	7 Labor Day	8 Change IMPROVE particle cartridges	9 IMPROVE Particle Sampling Day	10	11	12 IMPROVE Particle Sampling Day
13	14	15 IMPROVE Particle Sampling Day: Special cartridge change: move cassette 3 from old cartridge to new.	16	17	18 IMPROVE Particle Sampling Day	19
20	21 IMPROVE Particle Sampling Day	22 Change IMPROVE particle cartridges	23	24 IMPROVE Particle Sampling Day	25	26
27 IMPROVE Particle Sampling Day	28	29 Change IMPROVE particle cartridges	30 IMPROVE Particle Sampling Day	Oct 1	Oct 2	Oct 3 IMPROVE Particle Sampling Day

Sun	Mon	Tue	Wed	Thu	Fri	Sat
						1
2	3	4	5	6	7	8
9	10	11	12	13	14	15
16	17	18	19	20	21	22
23/30	24/31	25	26	27	28	29

- Call UC-Davis if you suspect lightning damage to your sampler.
- Check site conditions for interference or damage. (e.g., trees growing close to your sampler inlets)

For questions regarding the IMPROVE equipment or samples, please call:

UC Davis:
General Lab
(530) 752-1123

Sun	Mon	Tue	Wed	Thu	Fri	Sat
				1	2	3
4	5	6	7	8	9	10
11	12	13	14	15	16	17
18	19	20	21	22	23	24
25	26	27	28	29	30	31

Photo Locations: from left to right: (top row) PUSO,QUICI,QUIRE,QUIVA (second row) RAFA,REDW,ROMA,ROMO (third row) SACR,SAGA,SAGO,SAGU (bottom row) SAMA,SAPE



OCTOBER 2015

OPERATOR INVOLVEMENT — THE KEY TO NETWORK SUCCESS

Sun	Mon	Tue	Wed	Thu	Fri	Sat
				1	2	3 IMPROVE Particle Sampling Day
4	5	6 IMPROVE Particle Sampling Day: Special cartridge change: move cassette 3 from old cartridge to new.	7	8	9 IMPROVE Particle Sampling Day	10
11	12 Columbus Day IMPROVE Particle Sampling Day	13 Change IMPROVE particle cartridges	14	15 IMPROVE Particle Sampling Day	16	17
18 IMPROVE Particle Sampling Day	19	20 Change IMPROVE particle cartridges	21 IMPROVE Particle Sampling Day	22	23	24 IMPROVE Particle Sampling Day
25	26	27 IMPROVE Particle Sampling Day: Special cartridge change: move cassette 3 from old cartridge to new.	28	29	30 IMPROVE Particle Sampling Day	31 Halloween

SEPTEMBER 2015

Sun	Mon	Tue	Wed	Thu	Fri	Sat
		1	2	3	4	5
6	7	8	9	10	11	12
13	14	15	16	17	18	19
30	21	22	23	24	25	26
27	28	29	30			

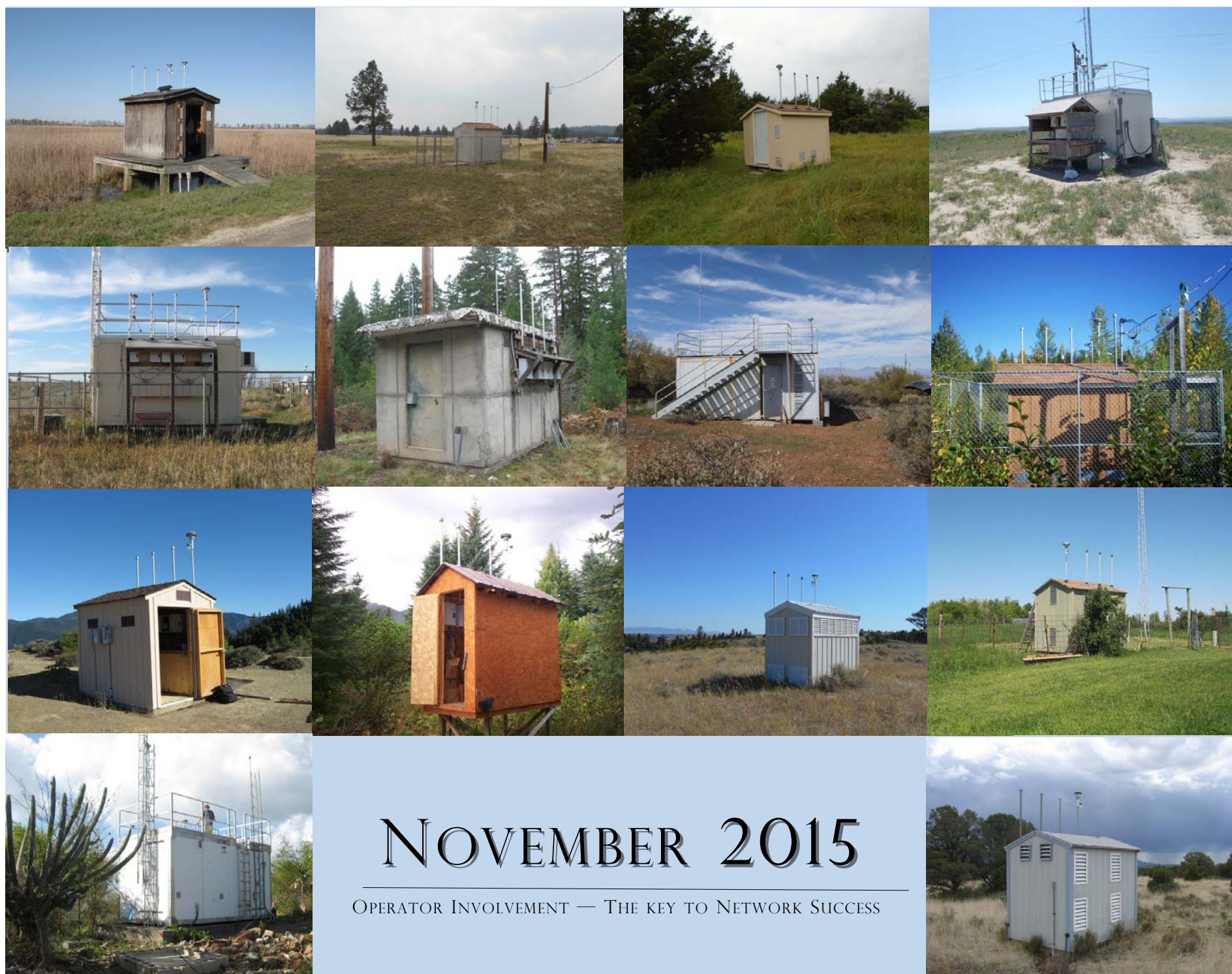
- IMPROVE operator training videos: <http://airquality.crocker.ucdavis.edu/improve/resources-operators/>
- Compare current log sheet values with those on the sample log sheet. This may be found posted outside a module, usually the C Module (green), or near the controller. If values are out of range, please call UC-Davis.

For questions regarding the IMPROVE equipment or samples, please call:

UC Davis:
General Lab
(530) 752-1123

NOVEMBER 2015

Sun	Mon	Tue	Wed	Thu	Fri	Sat
1	2	3	4	5	6	7
8	9	10	11	12	13	14
15	16	17	18	19	20	21
22	23	24	25	26	27	28
29	30					



NOVEMBER 2015

OPERATOR INVOLVEMENT — THE KEY TO NETWORK SUCCESS

Sun	Mon	Tue	Wed	Thu	Fri	Sat
1 Daylight Savings Time Ends Do not change sampler clock.	2 IMPROVE Particle Sampling Day	3 Change IMPROVE particle cartridges	4	5 IMPROVE Particle Sampling Day	6	7
8 IMPROVE Particle Sampling Day	9	10 Change IMPROVE particle cartridges	11 Veterans Day IMPROVE Particle Sampling Day	12	13	14 IMPROVE Particle Sampling Day
15	16	17 IMPROVE Particle Sampling Day: Special cartridge change: move cassette 3 from old cartridge to new.	18	19	20 IMPROVE Particle Sampling Day	21
22	23 IMPROVE Particle Sampling Day	24 Change IMPROVE particle cartridges	25	26 Thanksgiving IMPROVE Particle Sampling Day	27	28
29 IMPROVE Particle Sampling Day	30	Dec 1 Change IMPROVE particle cartridges	Dec 2 IMPROVE Particle Sampling Day	Dec 3	Dec 4	Dec 5 IMPROVE Particle Sampling Day

OCTOBER 2015

Sun	Mon	Tue	Wed	Thu	Fri	Sat
				1	2	3
4	5	6	7	8	9	10
11	12	13	14	15	16	17
18	19	20	21	22	23	24
25	26	27	28	29	30	31

- Electrical connections (e.g., extension cords) exposed to wet conditions should be GFCI protected.
- IMPROVE sampler operates on Standard Time, do not change the sampler clock to Daylight Savings Time.

For questions regarding the IMPROVE equipment or samples, please call:

UC Davis:
General Lab
(530) 752-1123

DECEMBER 2015

Sun	Mon	Tue	We	Thu	Fri	Sat
		1	2	3	4	5
6	7	8	9	10	11	12
13	14	15	16	17	18	19
20	21	22	23	24	25	26
27	28	29	30	31		

Photo Locations: from left to right: (top row) SWAN, SYCA, TALL, THBA (second row) THRO, THSI, TONT, TRCR (third row) TRIN, TUXE, ULBE, UPBU (bottom row) VIIS, VILA



DECEMBER 2015

OPERATOR INVOLVEMENT — THE KEY TO NETWORK SUCCESS

Sun	Mon	Tue	Wed	Thu	Fri	Sat
		1 Change IMPROVE particle cartridges	2 IMPROVE Particle Sampling Day	3	4	5 IMPROVE Particle Sampling Day
6	7	8 IMPROVE Particle Sampling Day: Special cartridge change: move cassette 3 from old cartridge to new.	9	10	11 IMPROVE Particle Sampling Day	12
13	14 IMPROVE Particle Sampling Day	15 Change IMPROVE particle cartridges	16	17 IMPROVE Particle Sampling Day	18	19
20 IMPROVE Particle Sampling Day	21	22 Change IMPROVE particle cartridges	23 IMPROVE Particle Sampling Day	24	25 Christmas Day	26 IMPROVE Particle Sampling Day
27	28	29 IMPROVE Particle Sampling Day	30	31	Jan 1, 2015 IMPROVE Particle Sampling Day	Jan 2

NOVEMBER 2015

Sun	Mon	Tue	Wed	Thu	Fri	Sat
1	2	3	4	5	6	7
8	9	10	11	12	13	14
15	16	17	18	19	20	21
22	23	24	25	26	27	28
29	30					

- Compare current log sheet values with those on the sample log sheet. This may be found posted outside a module, usually the C Module (green), or near the controller. If values are out of range, please call UC-Davis.
- Correct the time on your sampler if it deviates by more than 5 minutes from the time on a calibrated clock.

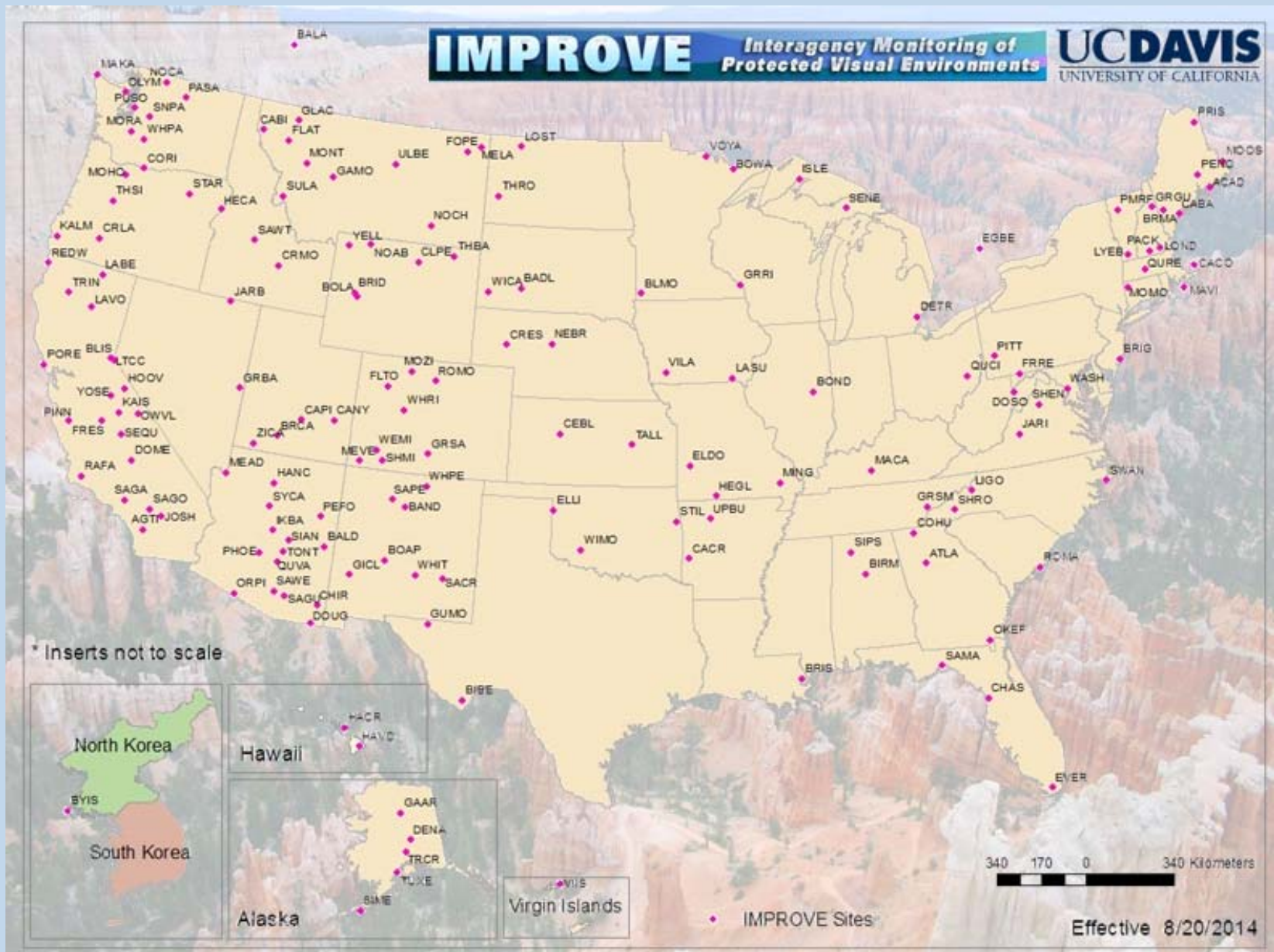
For questions regarding the IMPROVE equipment or samples, please call:

UC Davis:
General Lab
(530) 752-1123

JANUARY 2016

Sun	Mon	Tue	Wed	Thu	Fri	Sat
					1	2
3	4	5	6	7	8	9
10	11	12	13	14	15	16
17	18	19	20	21	22	23
24/31	25	26	27	28	29	30

Photo Locations: from left to right: (top row) VOYA, WASH, WEMI, WHIT (second row) WHPA, WHPE, WHRI, WICA (third row) WIMO, YELL, YOSE, ZICA



JANUARY 2016

OPERATOR INVOLVEMENT — THE KEY TO NETWORK SUCCESS

Sun	Mon	Tue	Wed	Thu	Fri	Sat
					1 New Year's Day IMPROVE Particle Sampling Day	2
3	4 IMPROVE Particle Sampling Day	5 Change IMPROVE particle cartridges	6	7 IMPROVE Particle Sampling Day	8	9
10 IMPROVE Particle Sampling Day	11	12 Change IMPROVE particle cartridges	13 IMPROVE Particle Sampling Day	14	15	16 IMPROVE Particle Sampling Day
17	18 Martin Luther King Jr. Day	19 IMPROVE Particle Sampling Day: Special cartridge change: move cassette 3 from old cartridge to new.	20	21	22 IMPROVE Particle Sampling Day	23
24	25 IMPROVE Particle Sampling Day	26 Change IMPROVE particle cartridges	27	28 IMPROVE Particle Sampling Day	29	30
31 IMPROVE Particle Sampling Day						

- IMPROVE operator training videos: <http://airquality.crocker.ucdavis.edu/improve/resources-operators/>
- Compare current log sheet values with those on the sample log sheet. This may be found posted outside a module, usually the C Module (green), or near the controller. If values are out of range, please call UC-Davis.
- Correct the time on your sampler if it deviates by more than 5 minutes from the time on a calibrated clock.

For questions regarding the IMPROVE equipment or samples, please call:

UC Davis:
General Lab
(530) 752-1123

FEBRUARY 2016						
Sun	Mon	Tue	Wed	Thu	Fri	Sat
	1	2	3	4	5	6
7	8	9	10	11	12	13
14	15	16	17	18	19	20
21	22	23	24	25	26	27
28	29					