

## CSN 2017 Site Report: NE Wastewater Treatment Plant

### AQS ID: 42-101-0048, POC 5 (39.991389, -75.080833) 1-in-3 Day Schedule

The Chemical Speciation Network (CSN) is a routine air monitoring network designed to complement the PM<sub>2.5</sub> monitoring network; support the implementation of PM<sub>2.5</sub> National Ambient Air Quality Standards (NAAQS); assist in developing and tracking emission control strategies; and provide data to aid in health studies. CSN sites are primarily located in urban areas and complement the largely rural Interagency Monitoring of PROtected Visual Environments (IMPROVE) network. The CSN target analytes are trace elements, ions, and carbon.

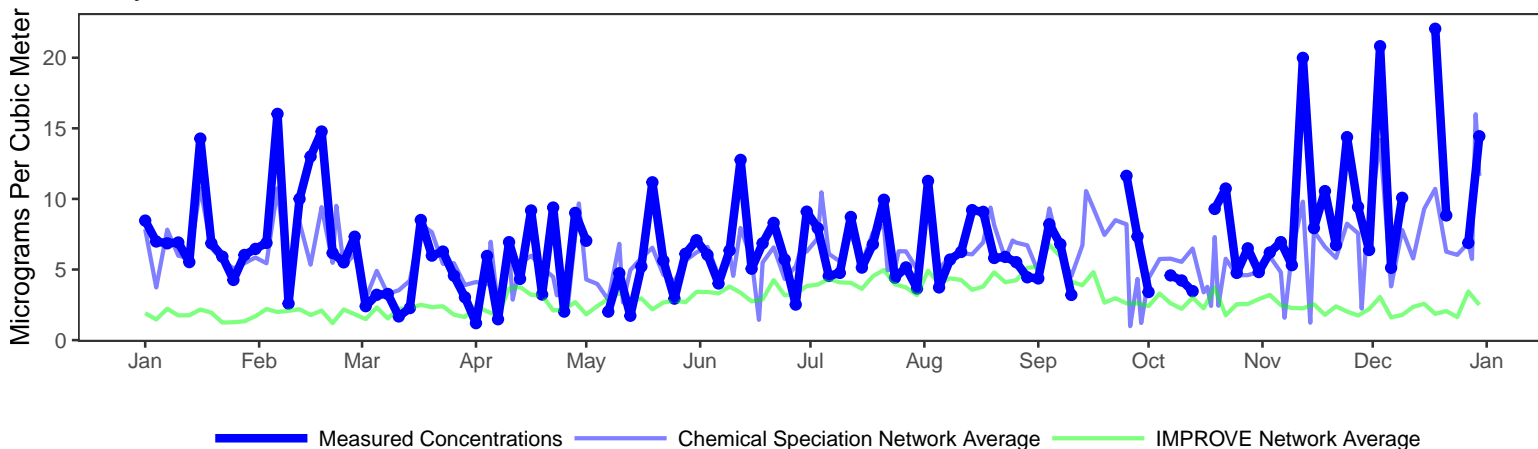
#### Percent of Samples Successfully Collected and Analyzed Per Year

| 2013 | 2014 | 2015 | 2016 | 2017 |
|------|------|------|------|------|
| 88   | 96   | 93   | 87   | 94   |

Samples Successfully Collected and Analyzed in 2017 by Filter Type. PTFE: 112 (91.8%), Nylon: 113 (92.6%), Quartz: 118 (96.7%)

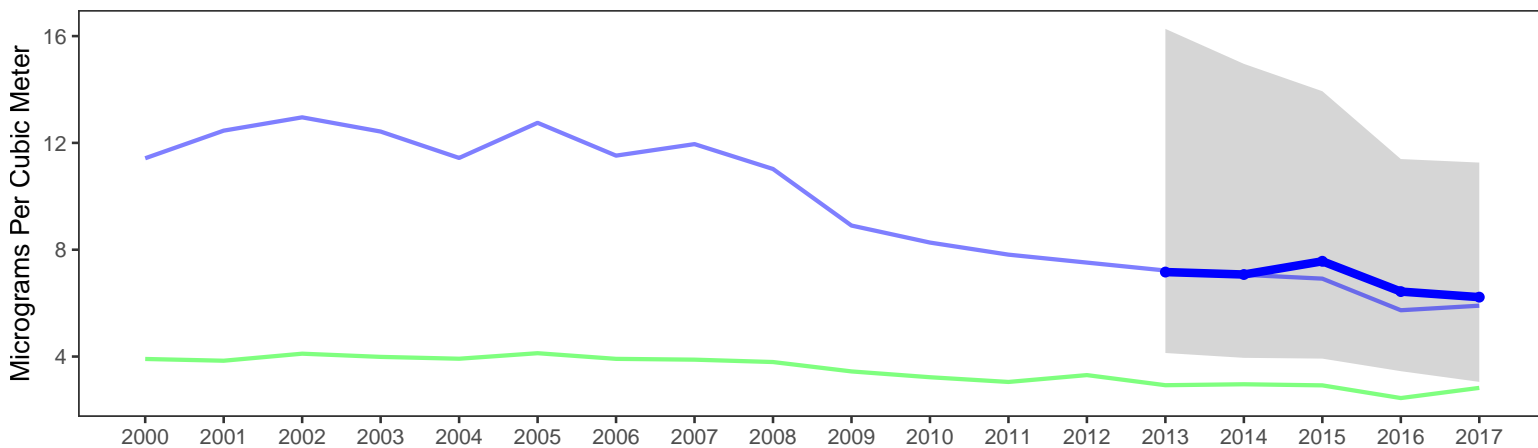
The plots below show temporal trends for site 42-101-0048 alongside network-wide CSN and IMPROVE average concentrations. The top plot shows the variability of the reconstructed fine mass (RFM) concentrations during 2017; RFM can only be calculated if all three filters collected on a sampling day are valid. The bottom plot illustrates the long-term trends; the gray shaded region represents the range of values measured each year at this site, illustrated using the 10<sup>th</sup> and 90<sup>th</sup> percentile values.

#### Daily Reconstructed Fine Mass in 2017



#### Long-Term Trends in Reconstructed Fine Mass

Missing years are due to low number of RFM values.



#### More Information

To view and download CSN data: [www3.epa.gov/airquality/airdata/](http://www3.epa.gov/airquality/airdata/)

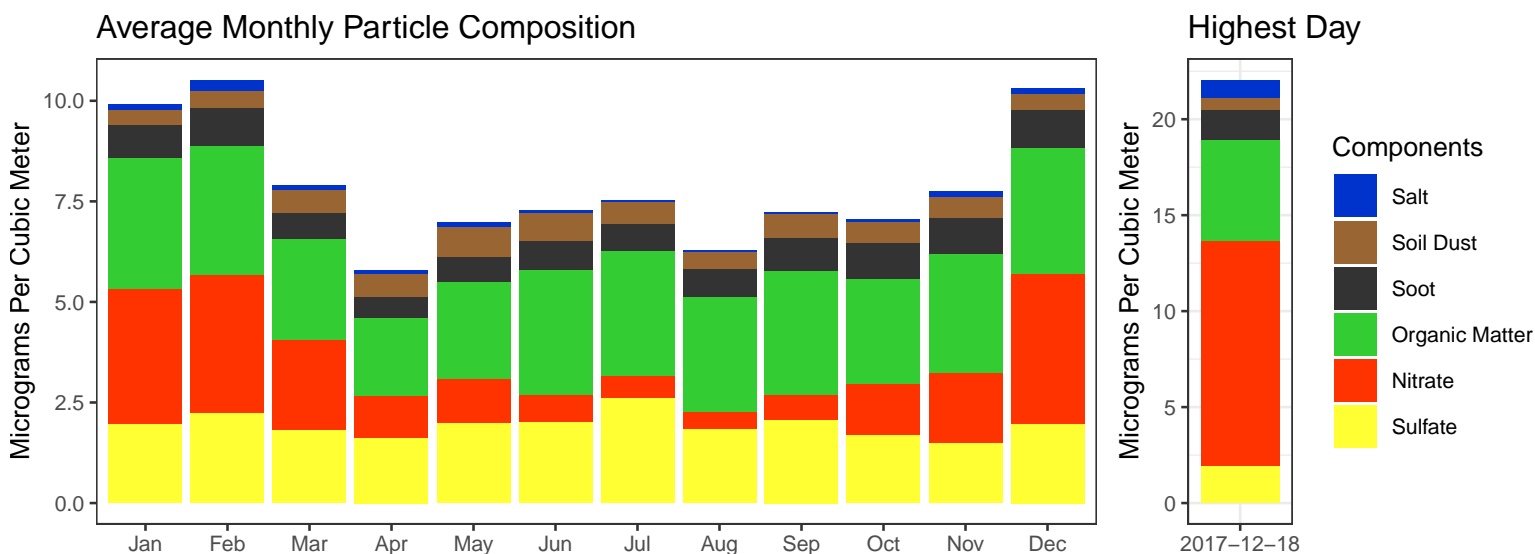
The EPA website with guidance documents and background information: <https://www.epa.gov/amtic/chemical-speciation-network-csn>

EPA real-time air monitoring data: <https://www.epa.gov/outdoor-air-quality-data>

The Univ. of California, Davis website with information about current research and publications: <https://aqrc.ucdavis.edu/csn>

The Colorado State Univ. website with data resources, literature, and visibility overviews: <http://vista.cira.colostate.edu/improve/>

The following plots summarize the chemical composition of particles collected at this site. The monthly averaged compositions calculated from 2013-2017 data are shown on the left while compositions for the day with the highest measured concentrations during 2017 are shown on the right.



| Components     | Calculation   | Natural Sources  | Anthropogenic Sources                                      |
|----------------|---|--|--|
| Salt           | $1.8 \cdot \text{Chloride}$   | Ocean spray, dry lakebeds                              | Chemical manufacturing, lake consumption                   |
| Soil Dust      | $2.2 \cdot \text{Al} + 2.49 \cdot \text{Si} + 1.63 \cdot \text{Ca} + 2.42 \cdot \text{Fe} + 1.94 \cdot \text{Ti}$ | Soil resuspension, dust storms<br>long-range transport | Construction, agriculture, deforestation,<br>unpaved roads |
| Soot           | <i>Elemental Carbon</i>   | Wildfires  | Motor vehicles, wood burning, smoking                      |
| Organic Matter | $1.4 \cdot \text{Organic Carbon}$   | Plants, animals, wildfires                             | Motor vehicles, cooking oils, household cleaners           |
| Nitrate        | $1.29 \cdot \text{Nitrate}$   | Plants, animals  | Fertilizer, stock yards, chemical manufacturing            |
| Sulfate        | $4.125 \cdot \text{Sulfur}$   | Volcanism  | Coal-fired power plants, chemical manufacturing            |

The following map shows the average RFM concentrations for nearby sites in both CSN and the rural IMPROVE Network. The point shapes indicate which network the sites are associated with. The color bar indicates the average annual RFM concentration (micrograms per cubic meter) measured at each site in 2017.

