

## Sipsey (SIPS1) 2020 Site Report

The Interagency Monitoring of Protected Visual Environments (IMPROVE) is a long-term air pollution measurement program designed to document and track visibility in protected areas. IMPROVE samples and analyzes the haze particles that impair visibility so their sources can be identified and addressed.

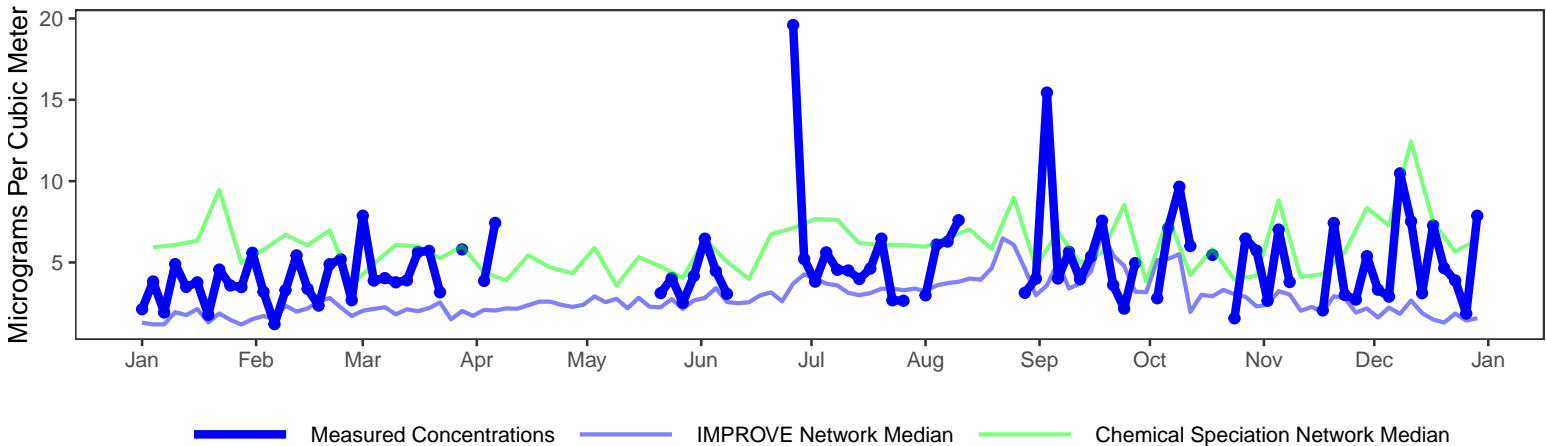
Percent of Samples Successfully Collected and Analyzed Per Year

2003	2004	2005	2006	2007	2008	2009	2010	2011	2012	2013	2014	2015	2016	2017	2018	2019	2020
91	92	98	95	95	91	79	93	78	91	89	85	93	94	99	97	90	74

Samples Successfully Collected and Analyzed in 2020 by Filter Type. PTFE: 90 (73.8%), Nylon: 91 (74.6%), Quartz: 91 (74.6%)

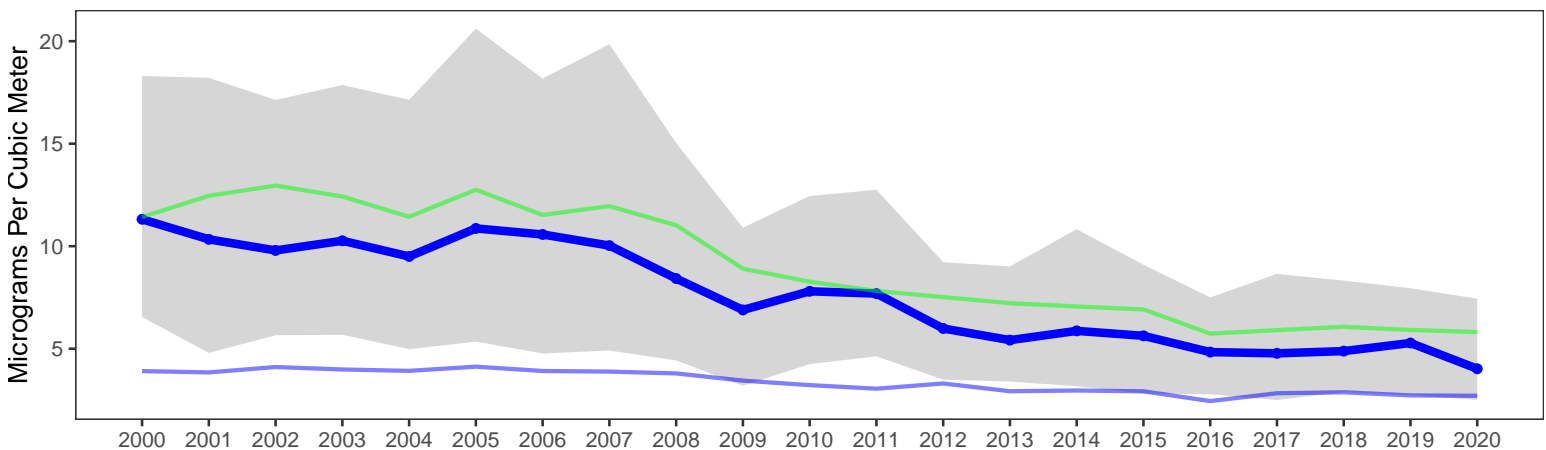
The plots below show temporal trends for site 01-079-0002 alongside network-wide CSN and IMPROVE median concentrations. The top plot shows the variability of the reconstructed fine mass (RFM) concentrations during 2020; RFM can only be calculated if all three filters collected on a sampling day are valid. The bottom plot illustrates the long-term trends of ambient concentrations; the gray shaded region represents the range of values measured each year at this site, illustrated using the 10<sup>th</sup> and 90<sup>th</sup> percentile values.

### Reconstructed Fine Particle Mass Concentrations in 2020



### Long-Term Trends in Reconstructed Fine Mass

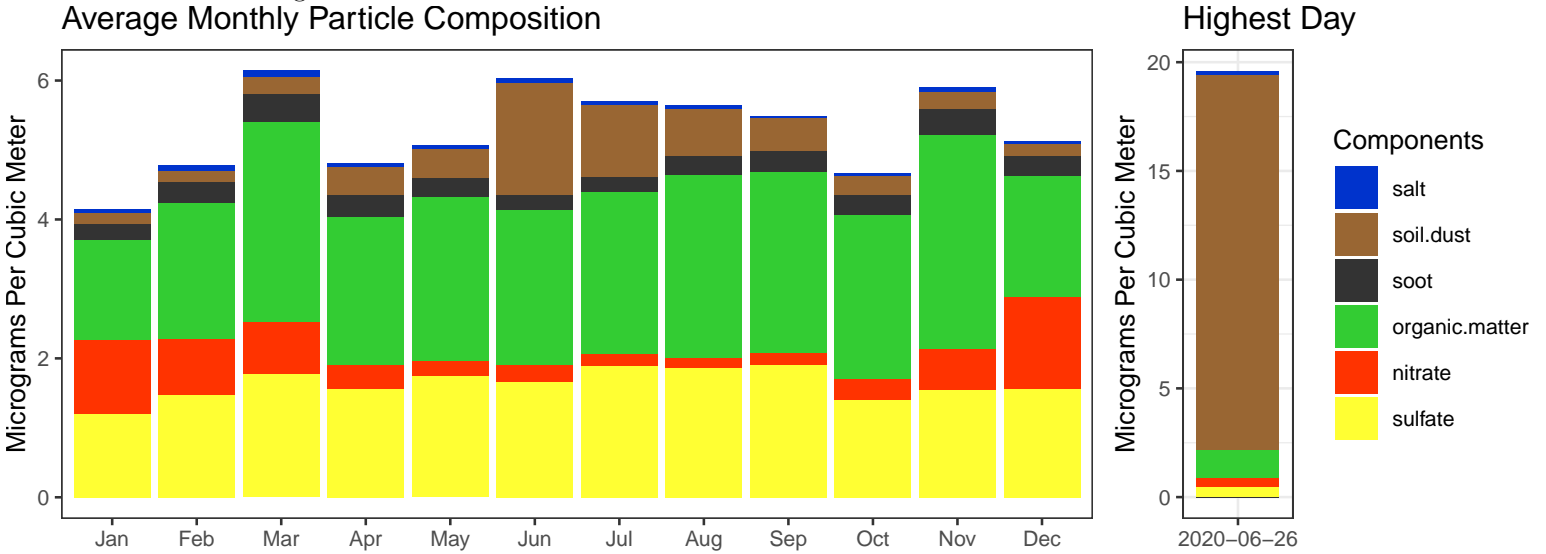
Missing years are due to low number of RFM values.



### More Information

To view and download IMPROVE data, you can visit: <https://www.epa.gov/outdoor-air-quality-data>  
 The Univ. of California, Davis website with information about current research and publications: <https://aqrc.ucdavis.edu/>  
 The Colorado State Univ. website with data resources, literature, and visibility overviews: <http://vista.cira.colostate.edu/Improve/>  
 The EPA website with guidance and background documents: <https://www.epa.gov/amtic/chemical-speciation-network-csn>  
 Real-time air monitoring data for the United States: <https://www.airnow.gov/>

The following plots summarize the chemical composition of particles collected at this site. The monthly averaged compositions calculated from 2016-2020 data are shown on the left while compositions for the day with the highest measured concentrations during 2020 are shown on the right.



Components	Calculation	Natural Sources	Anthropogenic Sources
Salt	$1.8 \cdot \text{Chloride}$	Ocean spray, dry lakebeds	Chemical manufacturing, lake consumption
Soil Dust	$2.2 \cdot \text{Al} + 2.49 \cdot \text{Si} + 1.63 \cdot \text{Ca} + 2.42 \cdot \text{Fe} + 1.94 \cdot \text{Ti}$	Soil resuspension, dust storms long-range transport	Construction, agriculture, deforestation, unpaved roads
Soot	<i>Elemental Carbon</i>	Wildfires	Motor vehicles, wood burning, smoking
Organic Matter	$1.4 \cdot \text{Organic Carbon}$	Plants, animals, wildfires	Motor vehicles, cooking oils, household cleaners
Nitrate	$1.29 \cdot \text{Nitrate}$	Plants, animals	Fertilizer, stock yards, chemical manufacturing
Sulfate	$4.125 \cdot \text{Sulfur}$	Volcanism	Coal-fired power plants, chemical manufacturing

The following map shows the average RFM concentrations for nearby sites in both CSN and the rural IMPROVE Network. The point shapes indicate which network the sites are associated with. The color bar indicates the average annual RFM concentration (micrograms per cubic meter) measured at each site in 2020.

